

## Product datasheet for **TA381236**

### Scaffold attachment factor B2 (SAFB2) Rabbit Polyclonal Antibody

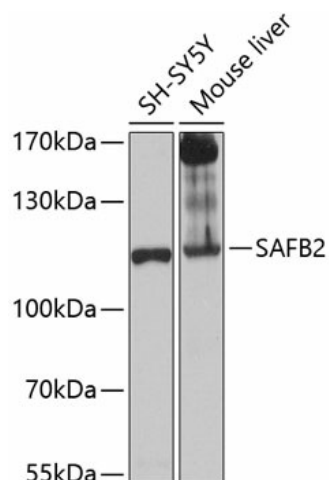
#### Product data:

Product Type:	Primary Antibodies
Applications:	IHC, WB
Recommended Dilution:	WB,1:500 - 1:2000 IHC,1:50 - 1:200
Reactivity:	Human, Mouse, Rat
Modifications:	Unmodified
Host:	Rabbit
Isotype:	IgG
Clonality:	Polyclonal
Immunogen:	Recombinant fusion protein containing a sequence corresponding to amino acids 1-255 of human SAFB2 (NP_055464.1).
Formulation:	Buffer: PBS with 0.02% sodium azide,50% glycerol,pH7.3.
Concentration:	lot specific
Purification:	Affinity purification
Conjugation:	Unconjugated
Storage:	Store at -20°C. Avoid freeze / thaw cycles.
Stability:	Shelf life: one year from despatch.
Predicted Protein Size:	12kDa/107kDa
Gene Name:	scaffold attachment factor B2
Database Link:	<a href="#">Entrez Gene 9667 Human Q14151</a>
Background:	The protein encoded by this gene, along with its paralog (scaffold attachment factor B1), is a repressor of estrogen receptor alpha. The encoded protein binds scaffold/matrix attachment region (S/MAR) DNA and is involved in cell cycle regulation, apoptosis, differentiation, the stress response, and regulation of immune genes.
Synonyms:	KIAA0138; SAF-B2

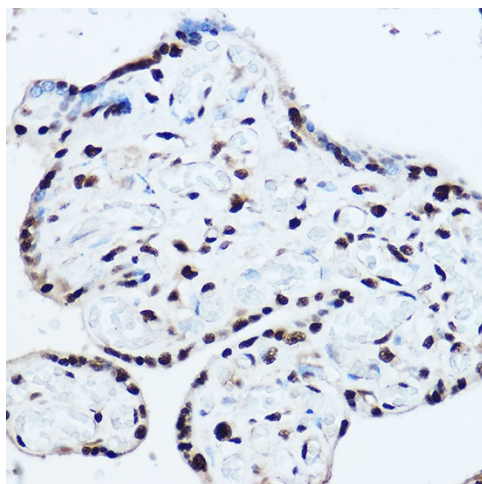


[View online »](#)

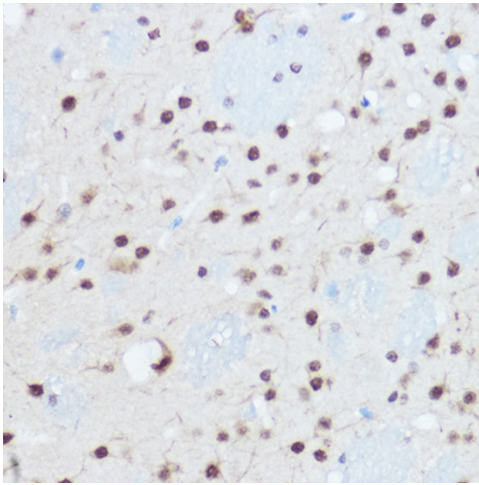
## Product images:



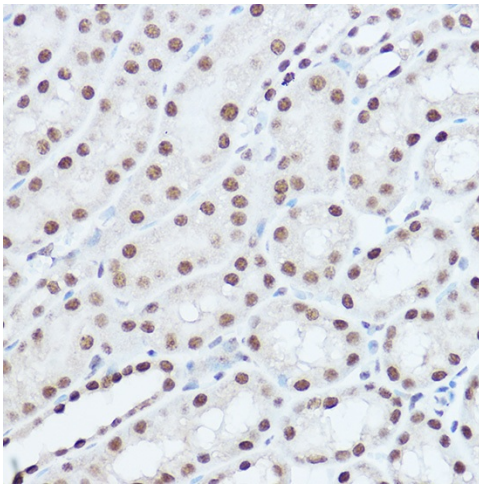
Western blot analysis of extracts of various cell lines, using SAFB2 antibody (TA381236) at 1:1000 dilution. | Secondary antibody: HRP Goat Anti-Rabbit IgG (H+L) at 1:10000 dilution. | Lysates/proteins: 25ug per lane. | Blocking buffer: 3% nonfat dry milk in TBST. | Detection: ECL Basic Kit . | Exposure time: 30s.



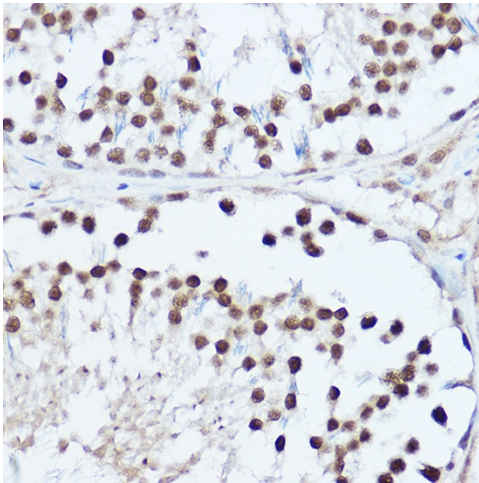
Immunohistochemistry of paraffin-embedded human placenta using SAFB2 Rabbit pAb (TA381236) at dilution of 1:100 (40x lens). Perform high pressure antigen retrieval with 10 mM citrate buffer pH 6.0 before commencing with IHC staining protocol.



Immunohistochemistry of paraffin-embedded mouse brain using SAFB2 Rabbit pAb (TA381236) at dilution of 1:100 (40x lens). Perform high pressure antigen retrieval with 10 mM citrate buffer pH 6.0 before commencing with IHC staining protocol.



Immunohistochemistry of paraffin-embedded mouse kidney using SAFB2 Rabbit pAb (TA381236) at dilution of 1:100 (40x lens). Perform high pressure antigen retrieval with 10 mM citrate buffer pH 6.0 before commencing with IHC staining protocol.



Immunohistochemistry of paraffin-embedded rat testis using SAFB2 Rabbit pAb (TA381236) at dilution of 1:100 (40x lens). Perform high pressure antigen retrieval with 10 mM citrate buffer pH 6.0 before commencing with IHC staining protocol.