

## Product datasheet for **TA381219S**

### Calprotectin (S100A8) Rabbit Polyclonal Antibody

#### Product data:

Product Type:	Primary Antibodies
Applications:	ICC/IF, IHC, WB
Recommended Dilution:	WB,1:500 - 1:2000 IHC,1:50 - 1:100 IF,1:50 - 1:100
Reactivity:	Human, Mouse, Rat
Modifications:	Unmodified
Host:	Rabbit
Isotype:	IgG
Clonality:	Polyclonal
Immunogen:	Recombinant fusion protein containing a sequence corresponding to amino acids 1-93 of human S100A8 (NP_002955.2).
Formulation:	PBS with 0.05% proclin300,50% glycerol,pH7.3.
Concentration:	lot specific
Purification:	Affinity purification
Conjugation:	Unconjugated
Storage:	Store at -20°C. Avoid freeze / thaw cycles.
Stability:	Shelf life: one year from despatch.
Predicted Protein Size:	10kDa
Gene Name:	S100 calcium binding protein A8
Database Link:	<a href="#">Entrez Gene 6279 Human P05109</a>



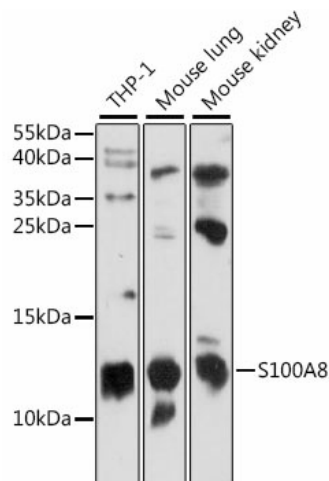
[View online »](#)

**Background:**

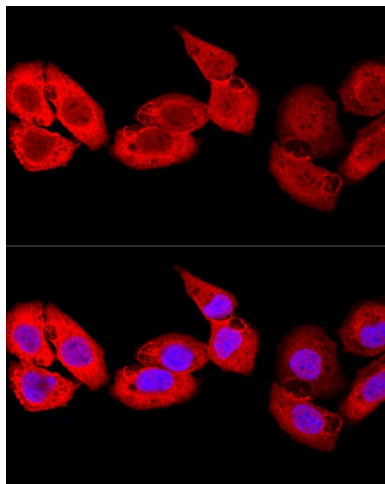
The protein encoded by this gene is a member of the S100 family of proteins containing 2 EF-hand calcium-binding motifs. S100 proteins are localized in the cytoplasm and/or nucleus of a wide range of cells, and involved in the regulation of a number of cellular processes such as cell cycle progression and differentiation. S100 genes include at least 13 members which are located as a cluster on chromosome 1q21. This protein may function in the inhibition of casein kinase and as a cytokine. Altered expression of this protein is associated with the disease cystic fibrosis. Multiple transcript variants encoding different isoforms have been found for this gene.

**Synonyms:**

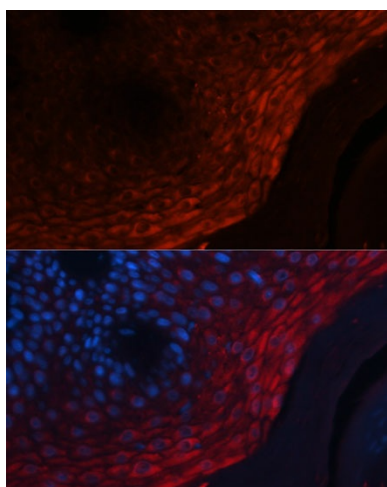
60B8AG; CAGA; Calgranulin-A; CFAG; CGLA; CP-10; L1Ag; MA387; MIF; MRP-8; MRP8; NIF; OTTHUMP00000015330; P8

**Product images:**


Western blot analysis of extracts of various cell lines, using S100A8 antibody ([TA381219]) at 1:1000 dilution. | Secondary antibody: HRP Goat Anti-Rabbit IgG (H+L) at 1:10000 dilution. | Lysates/proteins: 25ug per lane. | Blocking buffer: 3% nonfat dry milk in TBST. | Detection: ECL Enhanced Kit . | Exposure time: 90s.



Confocal immunofluorescence analysis of U-2 OS cells using S100A8 Polyclonal Antibody ([TA381219]) at dilution of 1:100. Blue: DAPI for nuclear staining.



Immunofluorescence analysis of human skin cancer using S100A8 Polyclonal Antibody ([TA381219]) at dilution of 1:100 (40x lens). Blue: DAPI for nuclear staining.