

Product datasheet for **TA381217**

S100A5 Rabbit Polyclonal Antibody

Product data:

Product Type:	Primary Antibodies
Applications:	IHC, WB
Recommended Dilution:	WB,1:500 - 1:2000 IHC,1:100 - 1:200
Reactivity:	Human
Modifications:	Unmodified
Host:	Rabbit
Isotype:	IgG
Clonality:	Polyclonal
Immunogen:	Recombinant fusion protein containing a sequence corresponding to amino acids 1-92 of human S100A5 (NP_002953.2).
Formulation:	Buffer: PBS with 0.02% sodium azide,50% glycerol,pH7.3.
Concentration:	lot specific
Purification:	Affinity purification
Conjugation:	Unconjugated
Storage:	Store at -20°C. Avoid freeze / thaw cycles.
Stability:	Shelf life: one year from despatch.
Predicted Protein Size:	10kDa/12kDa
Gene Name:	S100 calcium binding protein A5
Database Link:	Entrez Gene 6276 Human P33763



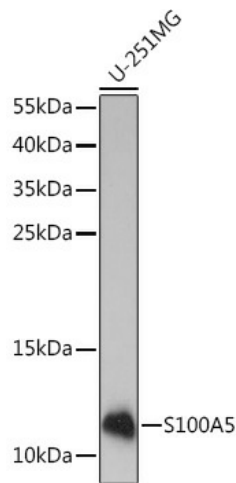
[View online »](#)

Background:

The protein encoded by this gene is a member of the S100 family of proteins containing 2 EF-hand calcium-binding motifs. S100 proteins are localized in the cytoplasm and/or nucleus of a wide range of cells, and involved in the regulation of a number of cellular processes such as cell cycle progression and differentiation. S100 genes include at least 13 members which are located as a cluster on chromosome 1q21. This protein has a Ca²⁺ affinity 20- to 100-fold higher than the other S100 proteins studied under identical conditions. This protein also binds Zn²⁺ and Cu²⁺, and Cu²⁺ strongly which impairs the binding of Ca²⁺. This protein is expressed in very restricted regions of the adult brain.

Synonyms:

S100D

Product images:

Western blot analysis of extracts of U-251MG cells, using S100A5 Rabbit pAb (TA381217) at 1:1000 dilution. | Secondary antibody: HRP Goat Anti-Rabbit IgG (H+L) at 1:10000 dilution. | Lysates/proteins: 25ug per lane. | Blocking buffer: 3% nonfat dry milk in TBST. | Detection: ECL Enhanced Kit. | Exposure time: 3min.