

Product datasheet for **TA381213**

S100A16 Rabbit Polyclonal Antibody

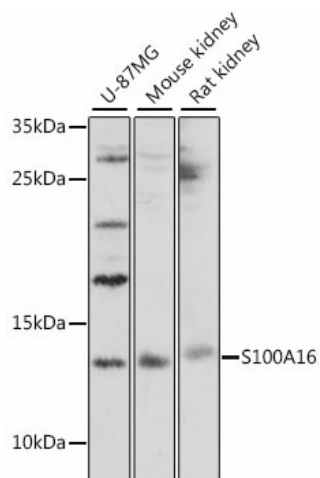
Product data:

Product Type:	Primary Antibodies
Applications:	WB
Recommended Dilution:	WB,1:500 - 1:2000
Reactivity:	Human, Mouse, Rat
Modifications:	Unmodified
Host:	Rabbit
Isotype:	IgG
Clonality:	Polyclonal
Immunogen:	Recombinant fusion protein containing a sequence corresponding to amino acids 1-103 of human S100A16 (NP_525127.1).
Formulation:	Buffer: PBS with 0.02% sodium azide,50% glycerol,pH7.3.
Concentration:	lot specific
Purification:	Affinity purification
Conjugation:	Unconjugated
Storage:	Store at -20°C. Avoid freeze / thaw cycles.
Stability:	Shelf life: one year from despatch.
Predicted Protein Size:	11kDa
Gene Name:	S100 calcium binding protein A16
Database Link:	Entrez Gene 140576 Human Q96FQ6
Background:	Calcium-binding protein. Binds one calcium ion per monomer. Can promote differentiation of adipocytes (in vitro (By similarity. Overexpression in preadipocytes increases their proliferation, enhances adipogenesis and reduces insulin-stimulated glucose uptake (By similarity.
Synonyms:	AAG13; DT1P1A7; MGC17528; OTTHUMP00000015465; OTTHUMP00000015466; OTTHUMP00000032894; S100F



[View online »](#)

Product images:



Western blot analysis of extracts of various cell lines, using S100A16 antibody (TA381213) at 1:1000 dilution. | Secondary antibody: HRP Goat Anti-Rabbit IgG (H+L) at 1:10000 dilution. | Lysates/proteins: 25ug per lane. | Blocking buffer: 3% nonfat dry milk in TBST. | Detection: ECL Basic Kit . | Exposure time: 90s.