

## Product datasheet for **TA381209**

### Ryanodine receptor 2 (RYR2) Rabbit Polyclonal Antibody

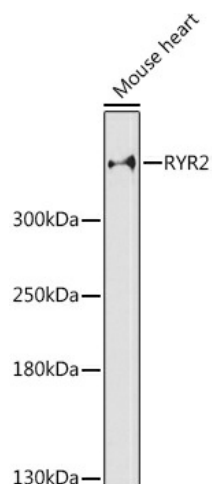
#### Product data:

|                         |                                                                                                                                                                                                                                                                                                                                                                                                                                                                 |
|-------------------------|-----------------------------------------------------------------------------------------------------------------------------------------------------------------------------------------------------------------------------------------------------------------------------------------------------------------------------------------------------------------------------------------------------------------------------------------------------------------|
| Product Type:           | Primary Antibodies                                                                                                                                                                                                                                                                                                                                                                                                                                              |
| Applications:           | ICC/IF, WB                                                                                                                                                                                                                                                                                                                                                                                                                                                      |
| Recommended Dilution:   | WB, 1:500 - 1:2000<br>IF, 1:50 - 1:200                                                                                                                                                                                                                                                                                                                                                                                                                          |
| Reactivity:             | Mouse                                                                                                                                                                                                                                                                                                                                                                                                                                                           |
| Modifications:          | Unmodified                                                                                                                                                                                                                                                                                                                                                                                                                                                      |
| Host:                   | Rabbit                                                                                                                                                                                                                                                                                                                                                                                                                                                          |
| Isotype:                | IgG                                                                                                                                                                                                                                                                                                                                                                                                                                                             |
| Clonality:              | Polyclonal                                                                                                                                                                                                                                                                                                                                                                                                                                                      |
| Immunogen:              | A synthetic peptide corresponding to a sequence within amino acids 4850-4950 of human RYR2 (NP_001026.2).                                                                                                                                                                                                                                                                                                                                                       |
| Formulation:            | Buffer: PBS with 0.02% sodium azide, 50% glycerol, pH 7.3.                                                                                                                                                                                                                                                                                                                                                                                                      |
| Concentration:          | lot specific                                                                                                                                                                                                                                                                                                                                                                                                                                                    |
| Purification:           | Affinity purification                                                                                                                                                                                                                                                                                                                                                                                                                                           |
| Conjugation:            | Unconjugated                                                                                                                                                                                                                                                                                                                                                                                                                                                    |
| Storage:                | Store at -20°C. Avoid freeze / thaw cycles.                                                                                                                                                                                                                                                                                                                                                                                                                     |
| Stability:              | Shelf life: one year from despatch.                                                                                                                                                                                                                                                                                                                                                                                                                             |
| Predicted Protein Size: | 564kDa/565kDa                                                                                                                                                                                                                                                                                                                                                                                                                                                   |
| Gene Name:              | ryanodine receptor 2                                                                                                                                                                                                                                                                                                                                                                                                                                            |
| Database Link:          | <a href="#">Q92736</a>                                                                                                                                                                                                                                                                                                                                                                                                                                          |
| Background:             | This gene encodes a ryanodine receptor found in cardiac muscle sarcoplasmic reticulum. The encoded protein is one of the components of a calcium channel, composed of a tetramer of the ryanodine receptor proteins and a tetramer of FK506 binding protein 1B proteins, that supplies calcium to cardiac muscle. Mutations in this gene are associated with stress-induced polymorphic ventricular tachycardia and arrhythmogenic right ventricular dysplasia. |
| Synonyms:               | ARVC2; ARVD2; hRYR-2; RYR-2; VTSIP                                                                                                                                                                                                                                                                                                                                                                                                                              |

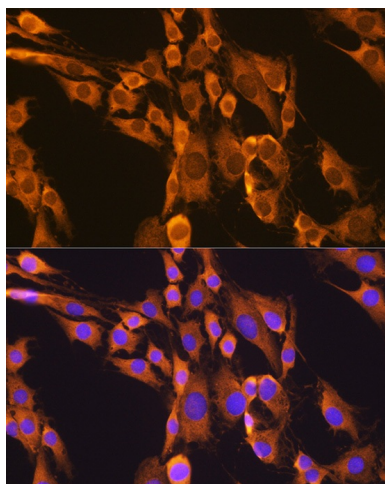


[View online »](#)

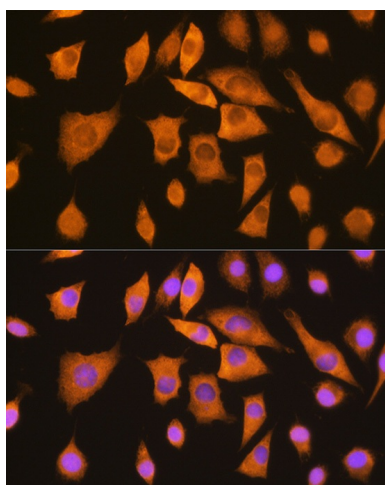
## Product images:



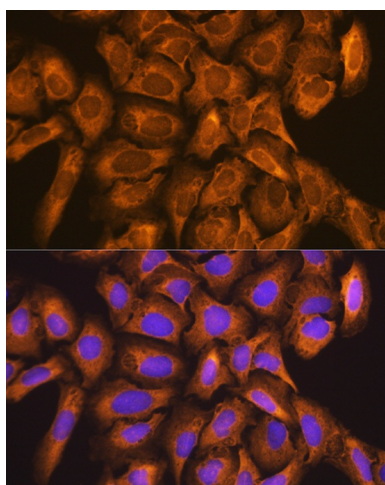
Western blot analysis of extracts of Mouse heart, using RYR2 antibody (TA381209) at 1:3000 dilution. | Secondary antibody: HRP Goat Anti-Rabbit IgG (H+L) at 1:10000 dilution. | Lysates/proteins: 25ug per lane. | Blocking buffer: 3% nonfat dry milk in TBST. | Detection: ECL Enhanced Kit. | Exposure time: 90s.



Immunofluorescence analysis of C6 cells using RYR2 Rabbit pAb (TA381209) at dilution of 100 (40x lens). Blue: DAPI for nuclear staining.



Immunofluorescence analysis of L929 cells using RYR2 Rabbit pAb (TA381209) at dilution of 100 (40x lens). Blue: DAPI for nuclear staining.



Immunofluorescence analysis of U-2 OS cells using RYR2 Rabbit pAb (TA381209) at dilution of 100 (40x lens). Blue: DAPI for nuclear staining.