

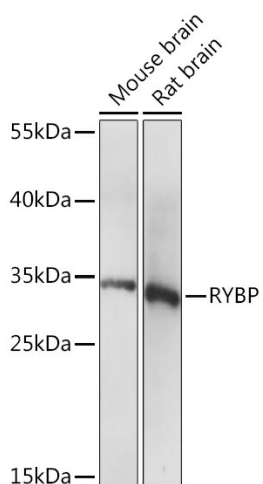
## Product datasheet for **TA381208S**

### **RYBP Rabbit Polyclonal Antibody**

#### **Product data:**

Product Type:	Primary Antibodies
Applications:	ELISA, WB
Recommended Dilution:	WB, 1:500 - 1:2000 ELISA, Recommended starting concentration is 1 µg/mL. Please optimize the concentration based on your specific assay requirements.
Reactivity:	Mouse, Rat
Modifications:	Unmodified
Host:	Rabbit
Isotype:	IgG
Clonality:	Polyclonal
Formulation:	Buffer: PBS with 0.02% sodium azide, 50% glycerol, pH 7.3.
Concentration:	lot specific
Purification:	Affinity purification
Conjugation:	Unconjugated
Storage:	Store at -20°C. Avoid freeze / thaw cycles.
Stability:	Shelf life: one year from despatch.
Predicted Protein Size:	25kDa
Gene Name:	RING1 and YY1 binding protein
Database Link:	<a href="#">Q8N488</a>
Background:	Predicted to enable DNA binding activity and transcription coregulator activity. Involved in several processes, including histone H2A monoubiquitination; negative regulation of proteasomal ubiquitin-dependent protein catabolic process; and positive regulation of transcription, DNA-templated. Located in nucleoplasm. Colocalizes with PcG protein complex.
Synonyms:	AAP1; APAP-1; DEDAF; YEAF1

[View online »](#)

**Product images:**

Western blot analysis of various lysates using RYBP Rabbit pAb ([TA381208]) at 1:1000 dilution. Secondary antibody: HRP-conjugated Goat anti-Rabbit IgG (H+L) (AS014) at 1:10000 dilution. Lysates/proteins: 25µg per lane. Blocking buffer: 3% nonfat dry milk in TBST. Detection: ECL Basic Kit (RM00020). Exposure time: 10s.