

## Product datasheet for **TA381196**

### RUSC2 Rabbit Polyclonal Antibody

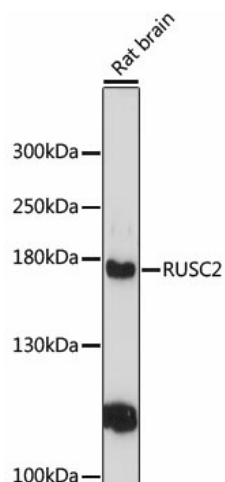
#### Product data:

Product Type:	Primary Antibodies
Applications:	WB
Recommended Dilution:	WB,1:1000 - 1:2000
Reactivity:	Rat
Modifications:	Unmodified
Host:	Rabbit
Isotype:	IgG
Clonality:	Polyclonal
Immunogen:	Recombinant fusion protein containing a sequence corresponding to amino acids 1217-1516 of human RUSC2 (NP_055621.1).
Formulation:	Buffer: PBS with 0.02% sodium azide,50% glycerol,pH7.3.
Concentration:	lot specific
Purification:	Affinity purification
Conjugation:	Unconjugated
Storage:	Store at -20°C. Avoid freeze / thaw cycles.
Stability:	Shelf life: one year from despatch.
Predicted Protein Size:	161kDa
Gene Name:	RUN and SH3 domain containing 2
Database Link:	<a href="#">Q8N2Y8</a>
Background:	This gene encodes a RUN and SH3 domain containing protein that interacts with Rab1b and Rab1-binding protein GM130. Alternatively spliced transcript variants have been observed for this gene.
Synonyms:	Iporin; KIAA0375



[View online »](#)

## Product images:



Western blot analysis of extracts of rat brain, using RUSC2 antibody (TA381196) at 1:3000 dilution. | Secondary antibody: HRP Goat Anti-Rabbit IgG (H+L) at 1:10000 dilution. | Lysates/proteins: 25ug per lane. | Blocking buffer: 3% nonfat dry milk in TBST. | Detection: ECL Enhanced Kit. | Exposure time: 90s.