

## Product datasheet for **TA381195**

### RUSC1 Rabbit Polyclonal Antibody

#### Product data:

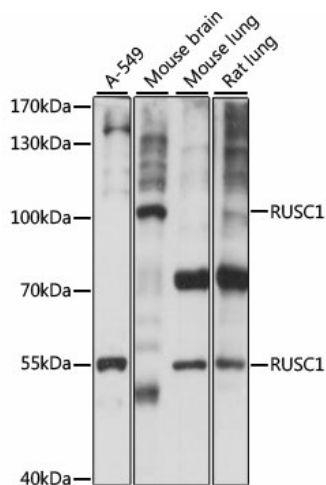
Product Type:	Primary Antibodies
Applications:	ICC/IF, WB
Recommended Dilution:	WB,1:200 - 1:2000 IF,1:50 - 1:200
Reactivity:	Human, Mouse, Rat
Modifications:	Unmodified
Host:	Rabbit
Isotype:	IgG
Clonality:	Polyclonal
Immunogen:	Recombinant fusion protein containing a sequence corresponding to amino acids 1-320 of human RUSC1 (NP_055143.2).
Formulation:	Buffer: PBS with 0.02% sodium azide,50% glycerol,pH7.3.
Concentration:	lot specific
Purification:	Affinity purification
Conjugation:	Unconjugated
Storage:	Store at -20°C. Avoid freeze / thaw cycles.
Stability:	Shelf life: one year from despatch.
Predicted Protein Size:	46kDa/52kDa/85kDa/96kDa
Gene Name:	RUN and SH3 domain containing 1
Database Link:	<a href="#">Entrez Gene 23623 Human Q9BVN2</a>
Background:	Associates with the adapter-like complex 4 (AP-4 and may therefore play a role in vesicular trafficking of proteins at the trans-Golgi network. Signaling adapter which plays a role in neuronal differentiation. Involved in regulation of NGF-dependent neurite outgrowth. May play a role in neuronal vesicular trafficking, specifically involving pre-synaptic membrane proteins (By similarity. Seems to be involved in signaling pathways that are regulated by the prolonged activation of MAPK. Can regulate the polyubiquitination of IKBKG and thus may be involved in regulation of the NF-kappa-B pathway.



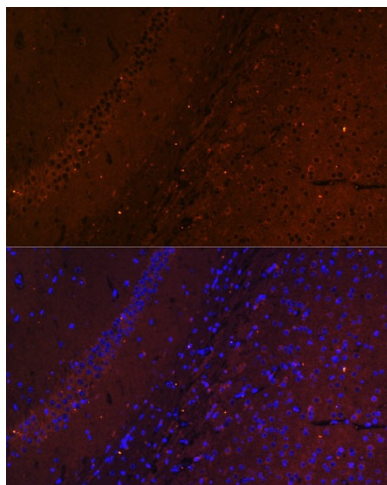
[View online »](#)

Synonyms: DKFZp761A1822; NESCA; OTTHUMP00000015896

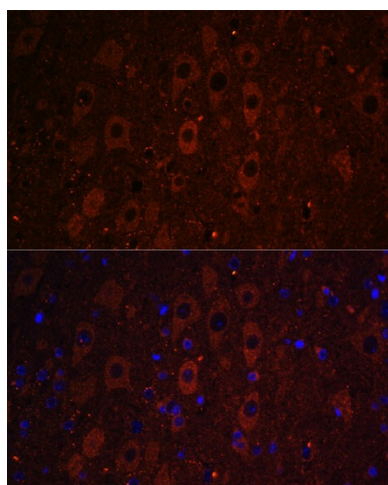
### Product images:



Western blot analysis of extracts of various cell lines, using RUSC1 antibody (TA381195) at 1:1000 dilution. | Secondary antibody: HRP Goat Anti-Rabbit IgG (H+L) at 1:10000 dilution. | Lysates/proteins: 25ug per lane. | Blocking buffer: 3% nonfat dry milk in TBST. | Detection: ECL Basic Kit . | Exposure time: 10s.



Immunofluorescence analysis of mouse brain using RUSC1 antibody (TA381195) at dilution of 1:100. Blue: DAPI for nuclear staining.



Immunofluorescence analysis of mouse brain using RUSC1 antibody (TA381195) at dilution of 1:100. Blue: DAPI for nuclear staining.