

## Product datasheet for **TA381186**

### RTN4RL1 Rabbit Polyclonal Antibody

#### Product data:

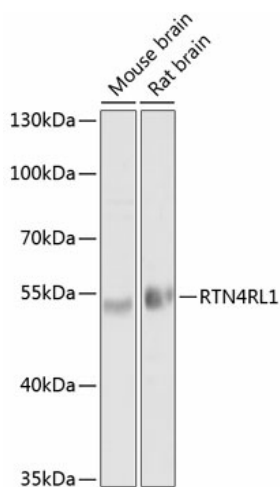
Product Type:	Primary Antibodies
Applications:	WB
Recommended Dilution:	WB,1:1000 - 1:4000
Reactivity:	Mouse, Rat
Modifications:	Unmodified
Host:	Rabbit
Isotype:	IgG
Clonality:	Polyclonal
Immunogen:	Recombinant fusion protein containing a sequence corresponding to amino acids 220-420 of human RTN4RL1 (NP_848663.1).
Formulation:	Buffer: PBS with 0.02% sodium azide,50% glycerol,pH7.3.
Concentration:	lot specific
Purification:	Affinity purification
Conjugation:	Unconjugated
Storage:	Store at -20°C. Avoid freeze / thaw cycles.
Stability:	Shelf life: one year from despatch.
Predicted Protein Size:	49kDa
Gene Name:	reticulon 4 receptor like 1
Database Link:	<a href="#">Q86UN2</a>
Background:	Cell surface receptor. Plays a functionally redundant role in postnatal brain development and in regulating axon regeneration in the adult central nervous system. Contributes to normal axon migration across the brain midline and normal formation of the corpus callosum. Protects motoneurons against apoptosis; protection against apoptosis is probably mediated by MAG. Plays a role in inhibiting neurite outgrowth and axon regeneration via its binding to neuronal chondroitin sulfate proteoglycans. Binds heparin (By similarity. Like other family members, plays a role in restricting the number dendritic spines and the number of synapses that are formed during brain development. Signaling mediates activation of Rho and downstream reorganization of the actin cytoskeleton.



[View online »](#)

Synonyms: DKFZp547J144; NgR3; NGRH2; NGRL2

### Product images:



Western blot analysis of extracts of various cell lines, using RTN4RL1 antibody (TA381186) at 1:1000 dilution. | Secondary antibody: HRP Goat Anti-Rabbit IgG (H+L) at 1:10000 dilution. | Lysates/proteins: 25ug per lane. | Blocking buffer: 3% nonfat dry milk in TBST. | Detection: ECL Basic Kit . | Exposure time: 20s.