

## Product datasheet for **TA381179**

### RTF1 Rabbit Polyclonal Antibody

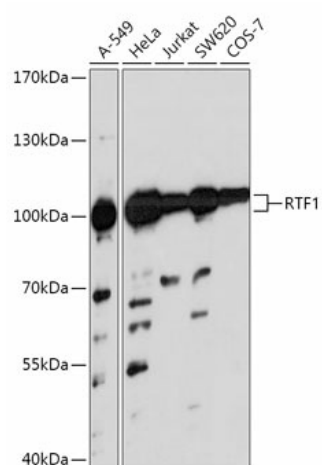
#### Product data:

Product Type:	Primary Antibodies
Applications:	WB
Recommended Dilution:	WB,1:500 - 1:2000
Reactivity:	Human, Mouse
Modifications:	Unmodified
Host:	Rabbit
Isotype:	IgG
Clonality:	Polyclonal
Immunogen:	A synthetic peptide corresponding to a sequence within amino acids 300-400 of human RTF1 (NP_055953.3).
Formulation:	Buffer: PBS with 0.02% sodium azide,50% glycerol,pH7.3.
Concentration:	lot specific
Purification:	Affinity purification
Conjugation:	Unconjugated
Storage:	Store at -20°C. Avoid freeze / thaw cycles.
Stability:	Shelf life: one year from despatch.
Predicted Protein Size:	80kDa
Gene Name:	RTF1 homolog, Paf1/RNA polymerase II complex component
Database Link:	<a href="#">Entrez Gene 23168 Human Q92541</a>
Background:	This locus may represent a gene involved in regulation of transcription elongation and chromatin remodeling, based on studies of similar proteins in other organisms. The encoded protein may bind single-stranded DNA. [provided by RefSeq, Sep 2010]
Synonyms:	CDG1N; GTL7; KIAA0252



[View online »](#)

## Product images:



Western blot analysis of extracts of various cell lines, using RTF1 antibody (TA381179) at 1:1000 dilution. | Secondary antibody: HRP Goat Anti-Rabbit IgG (H+L) at 1:10000 dilution. | Lysates/proteins: 25ug per lane. | Blocking buffer: 3% nonfat dry milk in TBST. | Detection: ECL Basic Kit . | Exposure time: 30s.