

Product datasheet for **TA381166S**

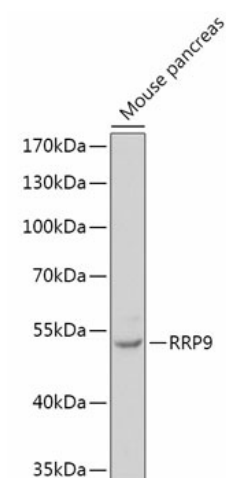
RRP9 Rabbit Polyclonal Antibody

Product data:

Product Type:	Primary Antibodies
Applications:	ELISA, WB
Recommended Dilution:	WB, 1:500 - 1:2000 ELISA, Recommended starting concentration is 1 µg/mL. Please optimize the concentration based on your specific assay requirements.
Reactivity:	Mouse
Modifications:	Unmodified
Host:	Rabbit
Isotype:	IgG
Clonality:	Polyclonal
Formulation:	Buffer: PBS with 0.02% sodium azide, 50% glycerol, pH 7.3.
Concentration:	lot specific
Purification:	Affinity purification
Conjugation:	Unconjugated
Storage:	Store at -20°C. Avoid freeze / thaw cycles.
Stability:	Shelf life: one year from despatch.
Predicted Protein Size:	52kDa
Gene Name:	ribosomal RNA processing 9, small subunit (SSU) processome component, homolog (yeast)
Database Link:	O43818
Background:	This gene encodes a member of the WD-repeat protein family. The encoded protein is a component of the nucleolar small nuclear ribonucleoprotein particle (snoRNP) and is essential for 18S rRNA processing during ribosome synthesis. It contains seven WD domains required for nucleolar localization and specific interaction with the U3 small nucleolar RNA (U3 snoRNA).
Synonyms:	RNU3IP2; U3-55K; U355K


[View online »](#)

Product images:



Western blot analysis of lysates from Mouse pancreas