

## Product datasheet for **TA381160**

### RRP1 like protein (RRP1) Rabbit Polyclonal Antibody

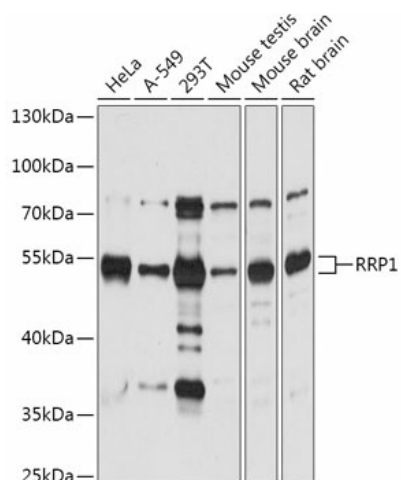
#### Product data:

Product Type:	Primary Antibodies
Applications:	WB
Recommended Dilution:	WB,1:500 - 1:2000
Reactivity:	Human, Mouse, Rat
Modifications:	Unmodified
Host:	Rabbit
Isotype:	IgG
Clonality:	Polyclonal
Immunogen:	Recombinant fusion protein containing a sequence corresponding to amino acids 26-253 of human RRP1 (NP_003674.1).
Formulation:	Buffer: PBS with 0.02% sodium azide,50% glycerol,pH7.3.
Concentration:	lot specific
Purification:	Affinity purification
Conjugation:	Unconjugated
Storage:	Store at -20°C. Avoid freeze / thaw cycles.
Stability:	Shelf life: one year from despatch.
Predicted Protein Size:	52kDa
Gene Name:	ribosomal RNA processing 1
Database Link:	<a href="#">Entrez Gene 8568 Human P56182</a>
Background:	The protein encoded by this gene is the putative homolog of the yeast ribosomal RNA processing protein RRP1. The encoded protein is involved in the late stages of nucleogenesis at the end of mitosis, and may be required for the generation of 28S rRNA. [provided by RefSeq, Jul 2008]
Synonyms:	D21S2056E; NNP-1; NNP1; NOP52; RRP1A



[View online »](#)

## Product images:



Western blot analysis of extracts of various cell lines, using RRP1 antibody (TA381160) at 1:1000 dilution. | Secondary antibody: HRP Goat Anti-Rabbit IgG (H+L) at 1:10000 dilution. | Lysates/proteins: 25ug per lane. | Blocking buffer: 3% nonfat dry milk in TBST. | Detection: ECL Basic Kit . | Exposure time: 60s.