

Product datasheet for **TA381152**

RRAGC Rabbit Polyclonal Antibody

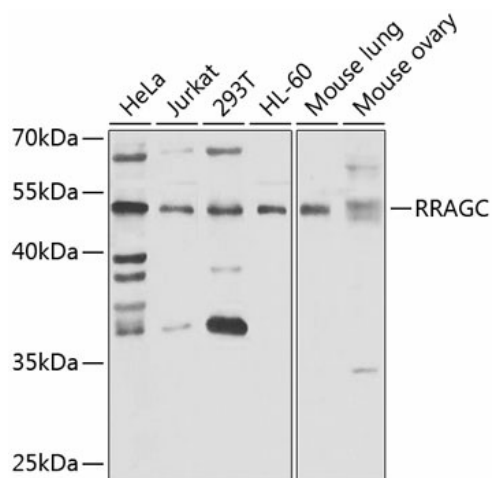
Product data:

Product Type:	Primary Antibodies
Applications:	WB
Recommended Dilution:	WB,1:500 - 1:2000
Reactivity:	Human, Mouse, Rat
Modifications:	Unmodified
Host:	Rabbit
Isotype:	IgG
Clonality:	Polyclonal
Immunogen:	Recombinant fusion protein containing a sequence corresponding to amino acids 1-250 of human RRAGC (NP_071440.1).
Formulation:	Buffer: PBS with 0.02% sodium azide,50% glycerol,pH7.3.
Concentration:	lot specific
Purification:	Affinity purification
Conjugation:	Unconjugated
Storage:	Store at -20°C. Avoid freeze / thaw cycles.
Stability:	Shelf life: one year from despatch.
Predicted Protein Size:	44kDa
Gene Name:	Ras related GTP binding C
Database Link:	Entrez Gene 64121 Human Q9HB90
Background:	This gene encodes a member of the GTR/RAG GTP-binding protein family. The encoded protein is a monomeric guanine nucleotide-binding protein which forms a heterodimer with RRAGA and RRAGB and is primarily localized to the cytoplasm. The encoded protein promotes intracellular localization of the mTOR complex. Alternative splicing results in multiple transcript variants.
Synonyms:	FLJ13311; GTR2; RagC; TIB929



[View online »](#)

Product images:



Western blot analysis of extracts of various cell lines, using RRAGC antibody (TA381152) at 1:1000 dilution. | Secondary antibody: HRP Goat Anti-Rabbit IgG (H+L) at 1:10000 dilution. | Lysates/proteins: 25ug per lane. | Blocking buffer: 3% nonfat dry milk in TBST. | Detection: ECL Enhanced Kit. | Exposure time: 30s.