

## Product datasheet for **TA381151S**

### RRAGA Rabbit Polyclonal Antibody

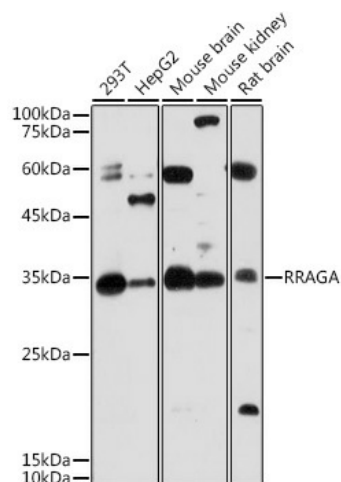
#### Product data:

Product Type:	Primary Antibodies
Applications:	ELISA, ICC/IF, WB
Recommended Dilution:	WB, 1:500 - 1:1000 IF/ICC, 1:50 - 1:200 ELISA, Recommended starting concentration is 1 µg/mL. Please optimize the concentration based on your specific assay requirements.
Reactivity:	Human, Mouse, Rat
Modifications:	Unmodified
Host:	Rabbit
Isotype:	IgG
Clonality:	Polyclonal
Formulation:	Buffer: PBS with 0.02% sodium azide, 50% glycerol, pH 7.3.
Concentration:	lot specific
Purification:	Affinity purification
Conjugation:	Unconjugated
Storage:	Store at -20°C. Avoid freeze / thaw cycles.
Stability:	Shelf life: one year from despatch.
Predicted Protein Size:	37kDa
Gene Name:	Ras related GTP binding A
Database Link:	<a href="#">Entrez Gene 10670 Human Q7L523</a>
Background:	Enables several functions, including GTP binding activity; protein dimerization activity; and ubiquitin protein ligase binding activity. Involved in several processes, including cellular response to amino acid starvation; negative regulation of autophagy; and positive regulation of TORC1 signaling. Located in lysosome and nucleus. Colocalizes with GATOR1 complex.
Synonyms:	FIP-1; FIP1; RAGA



[View online »](#)

## Product images:



Western blot analysis of various lysates using RRAGA Rabbit pAb ([TA381151]) at 1:1000 dilution.

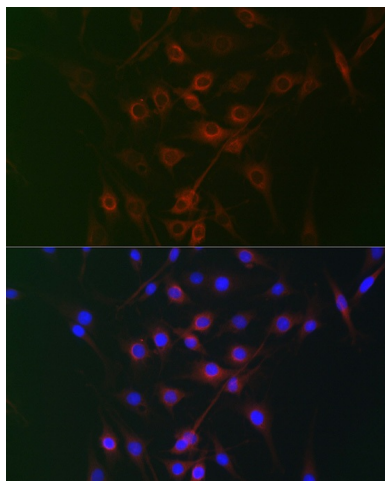
Secondary antibody: HRP-conjugated Goat anti-Rabbit IgG (H+L) (AS014) at 1:10000 dilution.

Lysates/proteins: 25µg per lane.

Blocking buffer: 3% nonfat dry milk in TBST.

Detection: ECL Basic Kit (RM00020).

Exposure time: 60s.



Immunofluorescence analysis of C6 cells using RRAGA Rabbit pAb ([TA381151]) at dilution of 1:100 (40x lens). Secondary antibody: Cy3-conjugated Goat anti-Rabbit IgG (H+L) (AS007) at 1:500 dilution. Blue: DAPI for nuclear staining.