

Product datasheet for **TA381143S**

RPS8 Rabbit Polyclonal Antibody

Product data:

Product Type:	Primary Antibodies
Applications:	ICC/IF, WB
Recommended Dilution:	WB,1:500 - 1:2000 IF,1:50 - 1:200
Reactivity:	Human, Mouse, Rat
Host:	Rabbit
Isotype:	IgG
Clonality:	Polyclonal
Immunogen:	Recombinant protein of human RPS8.
Formulation:	Buffer: PBS with 0.02% sodium azide,50% glycerol,pH7.3.
Concentration:	lot specific
Purification:	Affinity purification
Conjugation:	Unconjugated
Storage:	Store at -20°C. Avoid freeze / thaw cycles.
Stability:	Shelf life: one year from despatch.
Predicted Protein Size:	24kDa
Gene Name:	ribosomal protein S8
Database Link:	Entrez Gene 6202 Human P62241



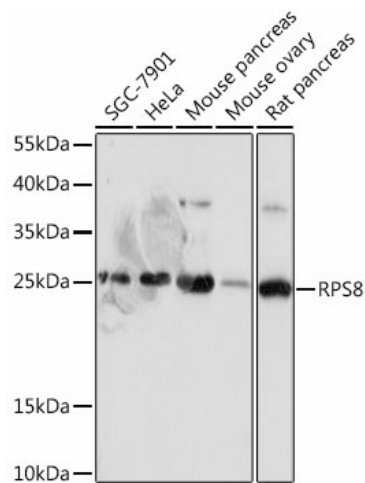
[View online »](#)

Background:

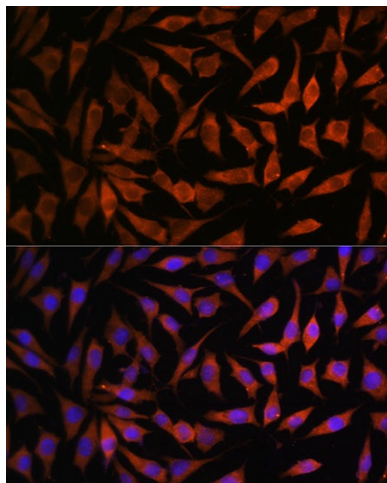
Ribosomes, the organelles that catalyze protein synthesis, consist of a small 40S subunit and a large 60S subunit. Together these subunits are composed of 4 RNA species and approximately 80 structurally distinct proteins. This gene encodes a ribosomal protein that is a component of the 40S subunit. The protein belongs to the S8E family of ribosomal proteins. It is located in the cytoplasm. Increased expression of this gene in colorectal tumors and colon polyps compared to matched normal colonic mucosa has been observed. This gene is co-transcribed with the small nucleolar RNA genes U38A, U38B, U39, and U40, which are located in its fourth, fifth, first, and second introns, respectively. As is typical for genes encoding ribosomal proteins, there are multiple processed pseudogenes of this gene dispersed through the genome.

Synonyms:

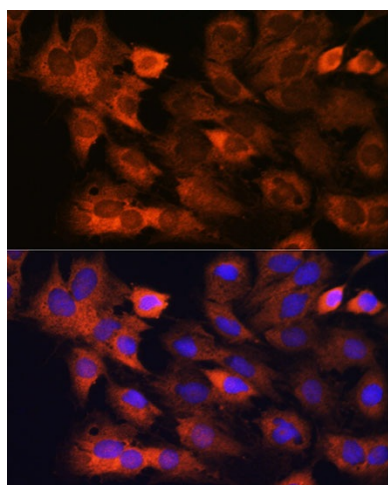
OK/SW-cl.83

Product images:


Western blot analysis of extracts of various cell lines, using RPS8 antibody ([TA381143]) at 1:1000 dilution. | Secondary antibody: HRP Goat Anti-Rabbit IgG (H+L) at 1:10000 dilution. | Lysates/proteins: 25ug per lane. | Blocking buffer: 3% nonfat dry milk in TBST. | Detection: ECL Basic Kit . | Exposure time: 90s.



Immunofluorescence analysis of L929 cells using RPS8 antibody ([TA381143]) at dilution of 1:100. Blue: DAPI for nuclear staining.



Immunofluorescence analysis of C6 cells using RPS8 antibody ([TA381143]) at dilution of 1:100. Blue: DAPI for nuclear staining.