

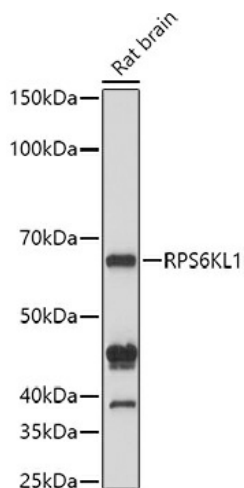
Product datasheet for **TA381141S**

RPS6KL1 Rabbit Polyclonal Antibody

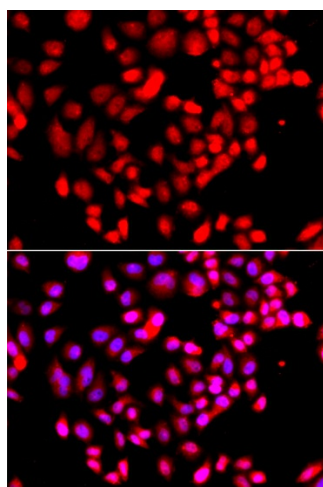
Product data:

Product Type:	Primary Antibodies
Applications:	ELISA, ICC/IF, WB
Recommended Dilution:	WB, 1:500 - 1:1000 IF/ICC, 1:50 - 1:200 ELISA, Recommended starting concentration is 1 µg/mL. Please optimize the concentration based on your specific assay requirements.
Reactivity:	Human, Mouse, Rat
Modifications:	Unmodified
Host:	Rabbit
Isotype:	IgG
Clonality:	Polyclonal
Formulation:	PBS with 0.09% Sodium azide, 50% glycerol, pH 7.3.
Concentration:	lot specific
Purification:	Affinity purification
Conjugation:	Unconjugated
Storage:	Store at -20°C. Avoid freeze / thaw cycles.
Stability:	Shelf life: one year from despatch.
Predicted Protein Size:	60kDa
Gene Name:	ribosomal protein S6 kinase like 1
Database Link:	Entrez Gene 83694 Human Q9Y6S9
Background:	Predicted to enable ATP binding activity; protein serine kinase activity; and protein serine/threonine kinase activity. Predicted to be involved in protein phosphorylation. Predicted to be located in ribosome.
Synonyms:	FLJ35734; MGC11287

[View online »](#)

Product images:


Western blot analysis of lysates from Rat brain



Immunofluorescence analysis of A549 cells using RPS6KL1 Rabbit pAb ([TA381141]). Secondary antibody: Cy3-conjugated Goat anti-Rabbit IgG (H+L) (AS007) at 1:500 dilution. Blue: DAPI for nuclear staining.