

Product datasheet for **TA381141**

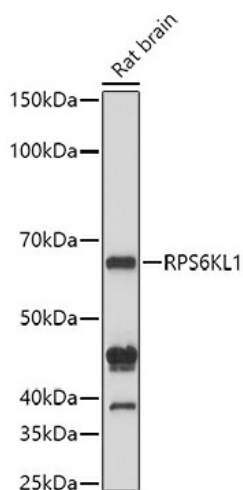
RPS6KL1 Rabbit Polyclonal Antibody

Product data:

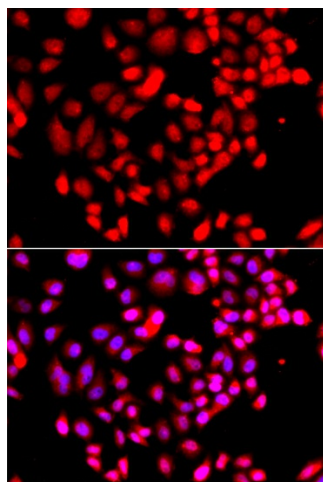
Product Type:	Primary Antibodies
Applications:	ICC/IF, WB
Recommended Dilution:	WB,1:500 - 1:2000 IF,1:50 - 1:200
Reactivity:	Human, Mouse, Rat
Modifications:	Unmodified
Host:	Rabbit
Isotype:	IgG
Clonality:	Polyclonal
Immunogen:	Recombinant fusion protein containing a sequence corresponding to amino acids 1-130 of human RPS6KL1 (NP_113652.2).
Formulation:	PBS with 0.09% Sodium azide,50% glycerol,pH7.3.
Concentration:	lot specific
Purification:	Affinity purification
Conjugation:	Unconjugated
Storage:	Store at -20°C. Avoid freeze / thaw cycles.
Stability:	Shelf life: one year from despatch.
Predicted Protein Size:	28kDa/59kDa/60kDa
Gene Name:	ribosomal protein S6 kinase like 1
Database Link:	Entrez Gene 83694 Human Q9Y6S9
Synonyms:	FLJ35734; MGC11287



[View online »](#)

Product images:

Western blot analysis of extracts of Rat brain cells, using RPS6KL1 antibody (TA381141) at 1:1000 dilution. | Secondary antibody: HRP Goat Anti-Rabbit IgG (H+L) at 1:10000 dilution. | Lysates/proteins: 25ug per lane. | Blocking buffer: 3% nonfat dry milk in TBST. | Detection: ECL Basic Kit . | Exposure time: 10s.



Immunofluorescence analysis of A549 cells using RPS6KL1 antibody (TA381141). Blue: DAPI for nuclear staining.