

## Product datasheet for **TA381139S**

### **P70 S6 Kinase beta (RPS6KB2) Rabbit Polyclonal Antibody**

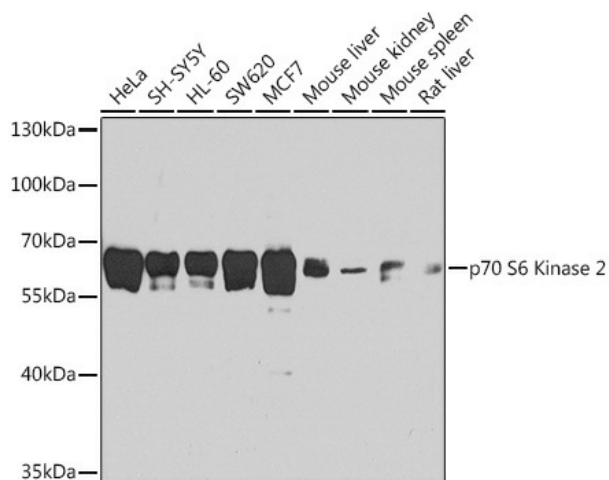
#### **Product data:**

<b>Product Type:</b>	Primary Antibodies
<b>Applications:</b>	WB
<b>Recommended Dilution:</b>	WB,1:500 - 1:1000 IHC,1:50 - 1:100
<b>Reactivity:</b>	Human, Mouse, Rat
<b>Modifications:</b>	Unmodified
<b>Host:</b>	Rabbit
<b>Isotype:</b>	IgG
<b>Clonality:</b>	Polyclonal
<b>Immunogen:</b>	Recombinant fusion protein containing a sequence corresponding to amino acids 1-170 of human p70 S6 Kinase 2 (NP_003943.2).
<b>Formulation:</b>	Buffer: PBS with 0.02% sodium azide,50% glycerol,pH7.3.
<b>Concentration:</b>	lot specific
<b>Purification:</b>	Affinity purification
<b>Conjugation:</b>	Unconjugated
<b>Storage:</b>	Store at -20°C. Avoid freeze / thaw cycles.
<b>Stability:</b>	Shelf life: one year from despatch.
<b>Predicted Protein Size:</b>	16kDa/53kDa
<b>Gene Name:</b>	ribosomal protein S6 kinase B2
<b>Database Link:</b>	<a href="#">Entrez Gene 6199 Human Q9UBS0</a>
<b>Background:</b>	This gene encodes a member of the RSK (ribosomal S6 kinase) family of serine/threonine kinases. This kinase contains a kinase catalytic domain and phosphorylates the S6 ribosomal protein and eukaryotic translation initiation factor 4B (eIF4B). Phosphorylation of S6 leads to an increase in protein synthesis and cell proliferation.
<b>Synonyms:</b>	KLS; p70(S6K)-beta; P70-beta; P70-beta-1; P70-beta-2; p70-S6KB; p70S6Kb; S6K-beta; S6K-beta2; S6K2; SRK; STK14B



[View online »](#)

## Product images:



Western blot analysis of extracts of various cell lines, using p70 S6 Kinase 2 antibody ([TA381139]) at 1:1000 dilution. | Secondary antibody: HRP Goat Anti-Rabbit IgG (H+L) at 1:10000 dilution. | Lysates/proteins: 25ug per lane. | Blocking buffer: 3% nonfat dry milk in TBST. | Detection: ECL Basic Kit . | Exposure time: 60s.