

## Product datasheet for **TA381135**

### **S6K1 (RPS6KB1) Rabbit Polyclonal Antibody**

#### **Product data:**

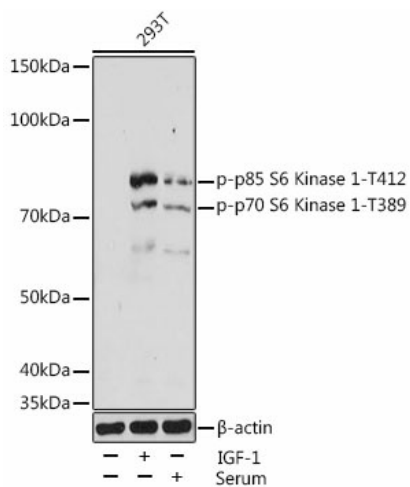
<b>Product Type:</b>	Primary Antibodies
<b>Applications:</b>	IHC, WB
<b>Recommended Dilution:</b>	WB,1:500 - 1:2000 IHC,1:50 - 1:200
<b>Reactivity:</b>	Human, Mouse, Rat
<b>Modifications:</b>	Phospho T389
<b>Host:</b>	Rabbit
<b>Isotype:</b>	IgG
<b>Clonality:</b>	Polyclonal
<b>Immunogen:</b>	A phospho synthetic peptide corresponding to residues surrounding T389 of human P70S6K1.
<b>Formulation:</b>	Buffer: PBS with 0.02% sodium azide,50% glycerol,pH7.3.
<b>Concentration:</b>	lot specific
<b>Purification:</b>	Affinity purification
<b>Conjugation:</b>	Unconjugated
<b>Storage:</b>	Store at -20°C. Avoid freeze / thaw cycles.
<b>Stability:</b>	Shelf life: one year from despatch.
<b>Predicted Protein Size:</b>	59kDa
<b>Gene Name:</b>	ribosomal protein S6 kinase B1
<b>Database Link:</b>	<a href="#">Entrez Gene 6198 Human P23443</a>
<b>Background:</b>	This gene encodes a member of the ribosomal S6 kinase family of serine/threonine kinases. The encoded protein responds to mTOR (mammalian target of rapamycin) signaling to promote protein synthesis, cell growth, and cell proliferation. Activity of this gene has been associated with human cancer. Alternatively spliced transcript variants have been observed. The use of alternative translation start sites results in isoforms with longer or shorter N-termini which may differ in their subcellular localizations. There are two pseudogenes for this gene on chromosome 17.



[View online »](#)

Synonyms: p70(S6K)-alpha; p70-alpha; p70-S6K; P70S6K; PS6K; S6K; S6K1; STK14A

**Product images:**



Western blot analysis of extracts of 293T cells, using Phospho-p70 S6 Kinase 1-T389 antibody (TA381135) at 1:1000 dilution. 293T cells were treated by IGF-1 (50 ng/mL) at 37°C for 5 minutes after serum-starvation overnight. 293T cells were treated by 10% FBS at 37°C for 30 minutes after serum-starvation overnight. | Secondary antibody: HRP Goat Anti-Rabbit IgG (H+L) at 1:10000 dilution. | Lysates/proteins: 25ug per lane. | Blocking buffer: 3% BSA. | Detection: ECL Basic Kit . | Exposure time: 30s.