

Product datasheet for **TA381134S**

S6K1 (RPS6KB1) Rabbit Polyclonal Antibody

Product data:

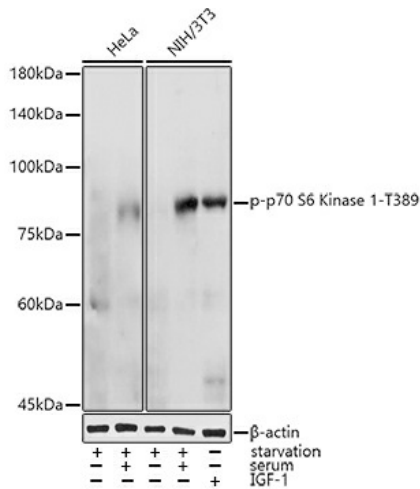
Product Type:	Primary Antibodies
Applications:	ICC/IF, WB
Recommended Dilution:	WB,1:500 - 1:2000 IF,1:50 - 1:200
Reactivity:	Human, Mouse, Rat
Modifications:	Phospho T389
Host:	Rabbit
Isotype:	IgG
Clonality:	Polyclonal
Immunogen:	A phospho specific peptide corresponding to residues surrounding T389 of human P70 S6K
Formulation:	Buffer: PBS with 0.02% sodium azide,50% glycerol,pH7.3.
Concentration:	lot specific
Purification:	Affinity purification
Conjugation:	Unconjugated
Storage:	Store at -20°C. Avoid freeze / thaw cycles.
Stability:	Shelf life: one year from despatch.
Predicted Protein Size:	51kDa/52kDa/56kDa/59kDa
Gene Name:	ribosomal protein S6 kinase B1
Database Link:	Entrez Gene 6198 Human P23443
Background:	This gene encodes a member of the ribosomal S6 kinase family of serine/threonine kinases. The encoded protein responds to mTOR (mammalian target of rapamycin) signaling to promote protein synthesis, cell growth, and cell proliferation. Activity of this gene has been associated with human cancer. Alternatively spliced transcript variants have been observed. The use of alternative translation start sites results in isoforms with longer or shorter N-termini which may differ in their subcellular localizations. There are two pseudogenes for this gene on chromosome 17.



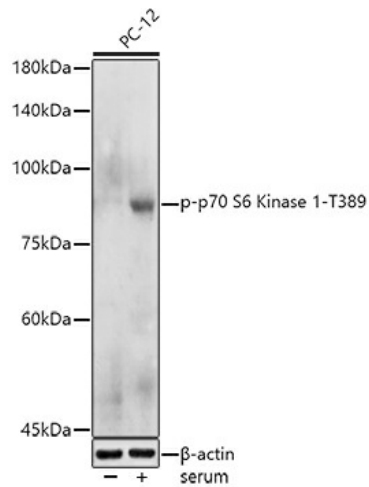
[View online »](#)

Synonyms: p70(S6K)-alpha; p70-alpha; p70-S6K; P70S6K; PS6K; S6K; S6K1; STK14A

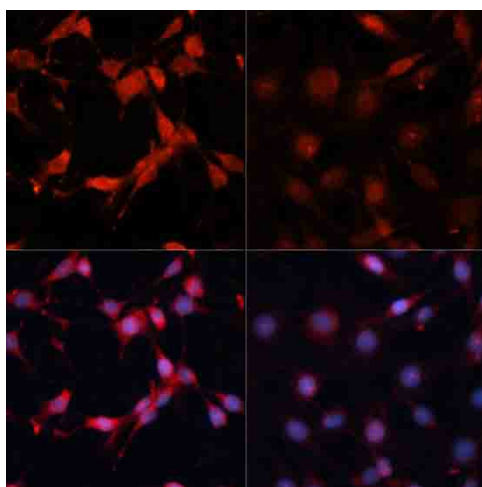
Product images:



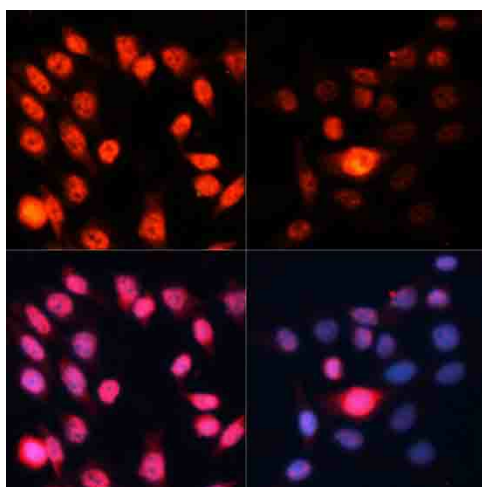
Western blot analysis of extracts of various cell lines, using Phospho-p70 S6 Kinase 1-T389 antibody ([TA381134]) at 1:1000 dilution. HeLa cells and NIH/3T3 cells were treated by Serum-starvation overnight at 37°C. NIH/3T3 cells were treated by oligomycin (0.5 uM) at 37°C for 30 minutes. | Secondary antibody: HRP Goat Anti-Rabbit IgG (H+L) at 1:10000 dilution. | Lysates/proteins: 25ug per lane. | Blocking buffer: 3% nonfat dry milk in TBST. | Detection: ECL Basic Kit . | Exposure time: 10s.



Western blot analysis of extracts of various cell lines, using Phospho-p70 S6 Kinase 1-T389 antibody ([TA381134]) at 1:1000 dilution. PC-12 cells were treated by 10% FBS at 37°C for 30 minutes after serum-starvation overnight. | Secondary antibody: HRP Goat Anti-Rabbit IgG (H+L) at 1:10000 dilution. | Lysates/proteins: 25ug per lane. | Blocking buffer: 3% nonfat dry milk in TBST. | Detection: ECL Basic Kit . | Exposure time: 90s.



Immunofluorescence analysis of C6 cells using Phospho-p70 S6 Kinase 1-T389 antibody ([TA381134]) at dilution of 1:100. C6 cells were treated by Serum-starvation overnight at 37°C.



Immunofluorescence analysis of HeLa cells using Phospho-p70 S6 Kinase 1-T389 antibody ([TA381134]) at dilution of 1:100. HeLa cells were treated by Serum-starvation overnight at 37°C.