

Product datasheet for **TA381122**

RSK1 p90 (RPS6KA1) Rabbit Polyclonal Antibody

Product data:

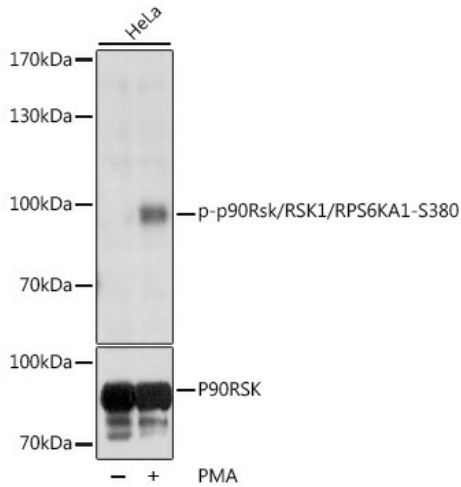
Product Type:	Primary Antibodies
Applications:	IP, WB
Recommended Dilution:	WB,1:500 - 1:2000 IP,1:50 - 1:100
Reactivity:	Human, Mouse, Rat
Modifications:	Phospho S380
Host:	Rabbit
Isotype:	IgG
Clonality:	Polyclonal
Immunogen:	A synthetic phosphorylated peptide around S380 of human p90Rsk/RSK1/RPS6KA1 (NP_002944.2).
Formulation:	Buffer: PBS with 0.02% sodium azide,50% glycerol,pH7.3.
Concentration:	lot specific
Purification:	Affinity purification
Conjugation:	Unconjugated
Storage:	Store at -20°C. Avoid freeze / thaw cycles.
Stability:	Shelf life: one year from despatch.
Predicted Protein Size:	72kDa/81kDa/82kDa/83kDa
Gene Name:	ribosomal protein S6 kinase A1
Database Link:	Entrez Gene 6195 Human Q15418
Background:	This gene encodes a member of the RSK (ribosomal S6 kinase) family of serine/threonine kinases. This kinase contains 2 nonidentical kinase catalytic domains and phosphorylates various substrates, including members of the mitogen-activated kinase (MAPK) signalling pathway. The activity of this protein has been implicated in controlling cell growth and differentiation. Alternate transcriptional splice variants, encoding different isoforms, have been characterized.



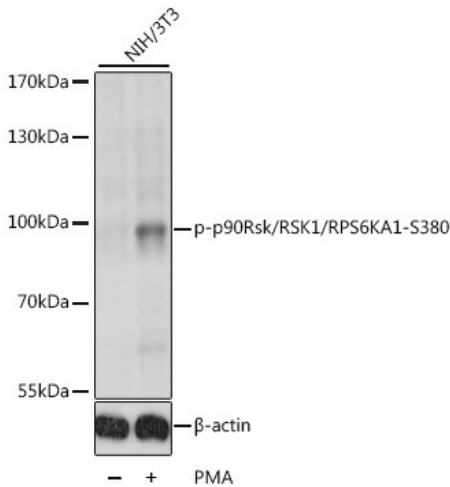
[View online »](#)

Synonyms: HU-1; MAPKAPK1A; p90S6K; pp90RSK1; RSK; RSK-1; RSK1

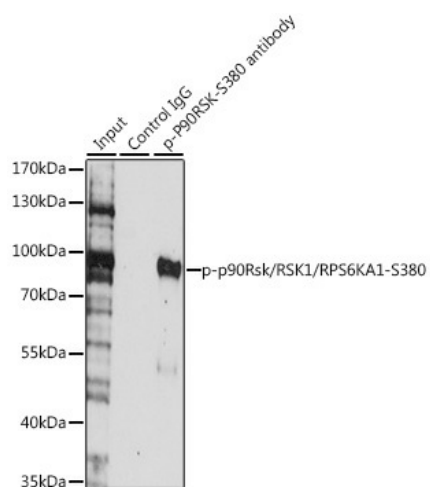
Product images:



Western blot analysis of extracts of various cell lines, using Phospho-p90Rsk/RSK1/RPS6KA1-S380 antibody (TA381122) at 1:1000 dilution or RPS6KA1 antibody (A15718). HeLa cells were treated by PMA/TPA (200 nM) at 37°C for 15 minutes after serum-starvation overnight. |Secondary antibody: HRP Goat Anti-Rabbit IgG (H+L) at 1:10000 dilution. |Lysates/proteins: 25ug per lane. |Blocking buffer: 3% BSA. |Detection: ECL Basic Kit . |Exposure time: 1s.



Western blot analysis of extracts of various cell lines, using Phospho-p90Rsk/RSK1/RPS6KA1-S380 antibody (TA381122) at 1:1000 dilution. NIH/3T3 cells were treated by PMA/TPA (200 nM) at 37°C for 30 minutes after serum-starvation overnight. |Secondary antibody: HRP Goat Anti-Rabbit IgG (H+L) at 1:10000 dilution. |Lysates/proteins: 25ug per lane. |Blocking buffer: 3% BSA. |Detection: ECL Basic Kit . |Exposure time: 1s.



Immunoprecipitation analysis of 200ug extracts of HeLa cells, using 3 ug Phospho-p90Rsk/RSK1/RPS6KA1-S380 pAb (TA381122). Western blot was performed from the immunoprecipitate using Phospho-p90Rsk/RSK1/RPS6KA1-S380 pAb (TA381122) at a dilution of 1:1000. HeLa cells were treated by EGF (100 ng/mL) at 37°C for 30 minutes after serum-starvation overnight.