

Product datasheet for **TA381089**

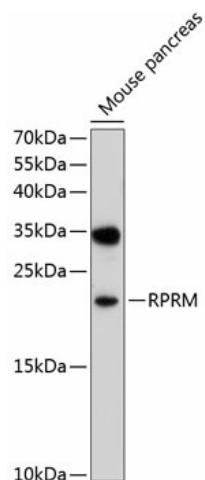
RPRM Rabbit Polyclonal Antibody

Product data:

Product Type:	Primary Antibodies
Applications:	WB
Recommended Dilution:	WB,1:500 - 1:2000
Reactivity:	Mouse
Modifications:	Unmodified
Host:	Rabbit
Isotype:	IgG
Clonality:	Polyclonal
Immunogen:	Recombinant fusion protein containing a sequence corresponding to amino acids 1-109 of human RPRM (NP_062819.1).
Formulation:	Buffer: PBS with 0.02% sodium azide,50% glycerol,pH7.3.
Concentration:	lot specific
Purification:	Affinity purification
Conjugation:	Unconjugated
Storage:	Store at -20°C. Avoid freeze / thaw cycles.
Stability:	Shelf life: one year from despatch.
Predicted Protein Size:	11kDa
Gene Name:	reprimo, TP53 dependent G2 arrest mediator candidate
Database Link:	Q9NS64
Background:	May be involved in the regulation of p53-dependent G2 arrest of the cell cycle. Seems to induce cell cycle arrest by inhibiting CDK1 activity and nuclear translocation of the CDC2 cyclin B1 complex (By similarity).
Synonyms:	FLJ90327; REPRIMO



[View online »](#)

Product images:

Western blot analysis of extracts of mouse pancreas, using RPRM antibody (TA381089) at 1:1000 dilution. | Secondary antibody: HRP Goat Anti-Rabbit IgG (H+L) at 1:10000 dilution. | Lysates/proteins: 25ug per lane. | Blocking buffer: 3% nonfat dry milk in TBST. | Detection: ECL Basic Kit . | Exposure time: 30s.