

Product datasheet for **TA381087S**

C20orf77 (RPRD1B) Rabbit Polyclonal Antibody

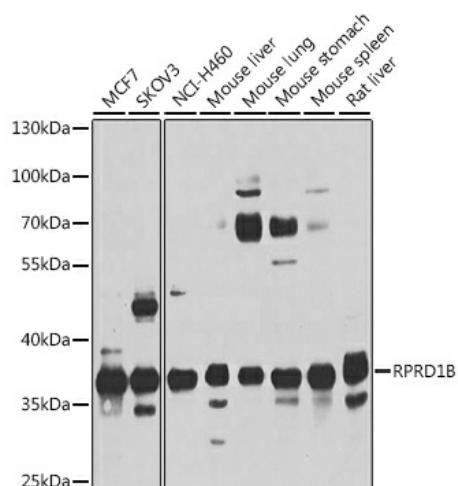
Product data:

Product Type:	Primary Antibodies
Applications:	ELISA, IHC, WB
Recommended Dilution:	WB, 1:500 - 1:2000 IHC-P, 1:100 - 1:200 ELISA, Recommended starting concentration is 1 µg/mL. Please optimize the concentration based on your specific assay requirements.
Reactivity:	Human, Mouse, Rat
Modifications:	Unmodified
Host:	Rabbit
Isotype:	IgG
Clonality:	Polyclonal
Formulation:	Buffer: PBS with 0.02% sodium azide, 50% glycerol, pH 7.3.
Concentration:	lot specific
Purification:	Affinity purification
Conjugation:	Unconjugated
Storage:	Store at -20°C. Avoid freeze / thaw cycles.
Stability:	Shelf life: one year from despatch.
Predicted Protein Size:	37kDa
Gene Name:	regulation of nuclear pre-mRNA domain containing 1B
Database Link:	Entrez Gene 58490 Human Q9NQG5
Background:	Enables RNA polymerase II complex binding activity and identical protein binding activity. Involved in positive regulation of cell population proliferation; regulation of cell cycle process; and regulation of transcription by RNA polymerase II. Located in nucleoplasm. Part of RNA polymerase II, holoenzyme.
Synonyms:	C20orf77; CREPT; dj1057B20.2; DKFZp434P0735; FLJ44520; NET60



[View online »](#)

Product images:



Western blot analysis of various lysates using RPRD1B Rabbit pAb (TA381087) at 1:1000 dilution.

Secondary antibody: HRP-conjugated Goat anti-Rabbit IgG (H+L) (AS014) at 1:10000 dilution.

Lysates/proteins: 25µg per lane.

Blocking buffer: 3% nonfat dry milk in TBST.

Detection: ECL Basic Kit (RM00020).

Exposure time: 15s.