

Product datasheet for **TA381079**

RPP21 Rabbit Polyclonal Antibody

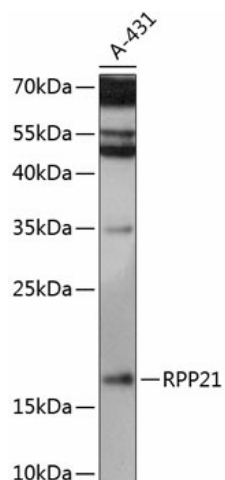
Product data:

Product Type:	Primary Antibodies
Applications:	WB
Recommended Dilution:	WB,1:500 - 1:2000
Reactivity:	Human, Mouse
Modifications:	Unmodified
Host:	Rabbit
Isotype:	IgG
Clonality:	Polyclonal
Immunogen:	Recombinant fusion protein containing a sequence corresponding to amino acids 1-154 of human RPP21 (NP_079115.1).
Formulation:	Buffer: PBS with 0.02% sodium azide,50% glycerol,pH7.3.
Concentration:	lot specific
Purification:	Affinity purification
Conjugation:	Unconjugated
Storage:	Store at -20°C. Avoid freeze / thaw cycles.
Stability:	Shelf life: one year from despatch.
Predicted Protein Size:	16kDa/17kDa/18kDa/20kDa
Gene Name:	ribonuclease P/MRP subunit p21
Database Link:	Entrez Gene 79897 Human Q9H633
Background:	RPP21 is a protein subunit of nuclear ribonuclease P, which processes the 5-prime leader sequence of precursor tRNAs (Jarrous et al., 2001 [PubMed 11497433]).[supplied by OMIM, Jan 2009]
Synonyms:	C6orf135; CAT60; Em:AB014085.3; FLJ22638



[View online »](#)

Product images:



Western blot analysis of extracts of A431 cells, using RPP21 antibody (TA381079) at 1:3000 dilution. | Secondary antibody: HRP Goat Anti-Rabbit IgG (H+L) at 1:10000 dilution. | Lysates/proteins: 25ug per lane. | Blocking buffer: 3% nonfat dry milk in TBST. | Detection: ECL Enhanced Kit . | Exposure time: 15s.