

Product datasheet for **TA381045**

RPL23 Rabbit Polyclonal Antibody

Product data:

Product Type:	Primary Antibodies
Applications:	ICC/IF, IHC, WB
Recommended Dilution:	WB,1:500 - 1:4000 IHC,1:50 - 1:200 IF,1:50 - 1:200
Reactivity:	Human, Mouse, Rat
Modifications:	Unmodified
Host:	Rabbit
Isotype:	IgG
Clonality:	Polyclonal
Immunogen:	Recombinant fusion protein containing a sequence corresponding to amino acids 1-140 of human RPL23 (NP_000969.1).
Formulation:	Buffer: PBS with 0.02% sodium azide,50% glycerol,pH7.3.
Concentration:	lot specific
Purification:	Affinity purification
Conjugation:	Unconjugated
Storage:	Store at -20°C. Avoid freeze / thaw cycles.
Stability:	Shelf life: one year from despatch.
Predicted Protein Size:	14kDa
Gene Name:	ribosomal protein L23
Database Link:	Entrez Gene 9349 Human P62829



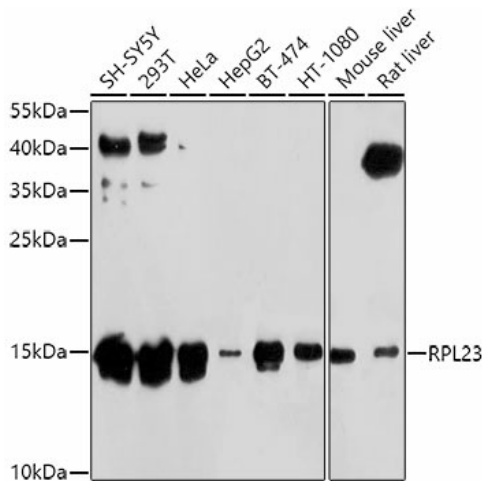
[View online »](#)

Background:

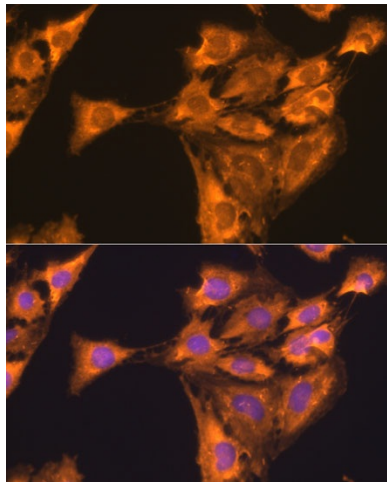
Ribosomes, the organelles that catalyze protein synthesis, consist of a small 40S subunit and a large 60S subunit. Together these subunits are composed of 4 RNA species and approximately 80 structurally distinct proteins. This gene encodes a ribosomal protein that is a component of the 60S subunit. The protein belongs to the L14P family of ribosomal proteins. It is located in the cytoplasm. This gene has been referred to as rpL17 because the encoded protein shares amino acid identity with ribosomal protein L17 from *Saccharomyces cerevisiae*; however, its official symbol is RPL23. As is typical for genes encoding ribosomal proteins, there are multiple processed pseudogenes of this gene dispersed through the genome.

Synonyms:

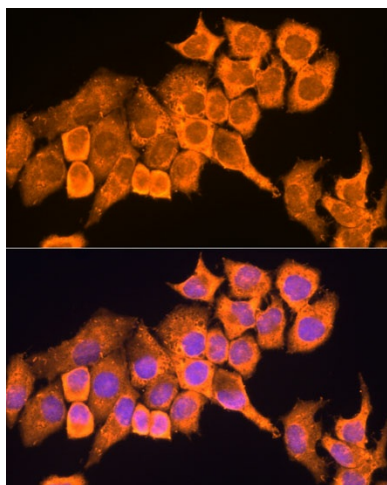
MGC72008; MGC111167; MGC117346; OTTHUMP00000164153; rpL17

Product images:


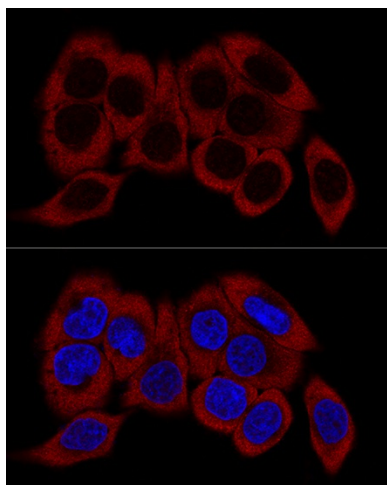
Western blot analysis of extracts of various cell lines, using RPL23 antibody (TA381045) at 1:1000 dilution. | Secondary antibody: HRP Goat Anti-Rabbit IgG (H+L) at 1:10000 dilution. | Lysates/proteins: 25ug per lane. | Blocking buffer: 3% nonfat dry milk in TBST. | Detection: ECL Basic Kit. | Exposure time: 5s.



Immunofluorescence analysis of C6 cells using RPL23 antibody (TA381045) at dilution of 1:100. Blue: DAPI for nuclear staining.



Immunofluorescence analysis of HeLa cells using RPL23 antibody (TA381045) at dilution of 1:100. Blue: DAPI for nuclear staining.



Confocal immunofluorescence analysis of HeLa cells using RPL23 Polyclonal Antibody (TA381045) at dilution of 1:200. Blue: DAPI for nuclear staining.