

## Product datasheet for **TA381030**

### Rabphilin 3A (RPH3A) Rabbit Polyclonal Antibody

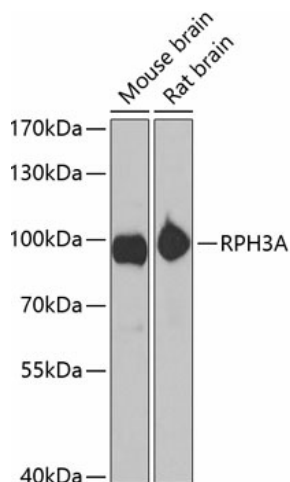
#### Product data:

Product Type:	Primary Antibodies
Applications:	WB
Recommended Dilution:	WB,1:500 - 1:2000
Reactivity:	Mouse, Rat
Modifications:	Unmodified
Host:	Rabbit
Isotype:	IgG
Clonality:	Polyclonal
Immunogen:	Recombinant fusion protein containing a sequence corresponding to amino acids 1-280 of human RPH3A (NP_055769.2).
Formulation:	Buffer: PBS with 0.02% sodium azide,50% glycerol,pH7.3.
Concentration:	lot specific
Purification:	Affinity purification
Conjugation:	Unconjugated
Storage:	Store at -20°C. Avoid freeze / thaw cycles.
Stability:	Shelf life: one year from despatch.
Predicted Protein Size:	76kDa
Gene Name:	rabphilin 3A
Database Link:	<a href="#">Q9Y2J0</a>
Background:	The protein encoded by this gene is thought to be an effector for RAB3A, which is a small G protein that acts in the late stages of neurotransmitter exocytosis. The encoded protein may be involved in neurotransmitter release and synaptic vesicle traffic.
Synonyms:	exophilin-1; KIAA0985; rabphilin



[View online »](#)

## Product images:



Western blot analysis of extracts of various cell lines, using RPH3A antibody (TA381030) at 1:1000 dilution. | Secondary antibody: HRP Goat Anti-Rabbit IgG (H+L) at 1:10000 dilution. | Lysates/proteins: 25ug per lane. | Blocking buffer: 3% nonfat dry milk in TBST. | Detection: ECL Basic Kit . | Exposure time: 10s.