

Product datasheet for **TA381024S**

RPE Rabbit Polyclonal Antibody

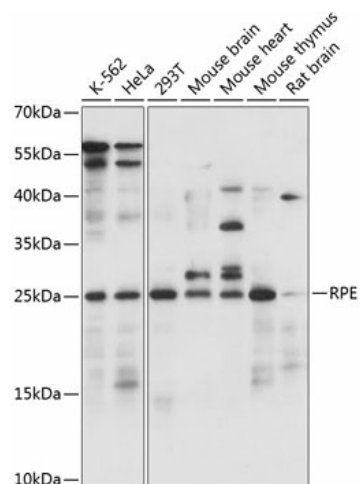
Product data:

Product Type:	Primary Antibodies
Applications:	ICC/IF, WB
Recommended Dilution:	WB,1:500 - 1:2000 IHC,1:50 - 1:100 IF,1:50 - 1:100
Reactivity:	Human, Mouse, Rat
Modifications:	Unmodified
Host:	Rabbit
Isotype:	IgG
Clonality:	Polyclonal
Immunogen:	Recombinant fusion protein containing a sequence corresponding to amino acids 1-228 of human RPE (NP_954699.1).
Formulation:	Buffer: PBS with 0.02% sodium azide,50% glycerol,pH7.3.
Concentration:	lot specific
Purification:	Affinity purification
Conjugation:	Unconjugated
Storage:	Store at -20°C. Avoid freeze / thaw cycles.
Stability:	Shelf life: one year from despatch.
Predicted Protein Size:	17kDa/19kDa/21kDa/23kDa/24kDa
Gene Name:	ribulose-5-phosphate-3-epimerase
Database Link:	Entrez Gene 6120 Human Q96AT9
Background:	Catalyzes the reversible epimerization of D-ribulose 5-phosphate to D-xylulose 5-phosphate.
Synonyms:	MGC2636; OTTHUMP00000206411; Ribulose-5-phosphate-3-epimerase; RPE2-1

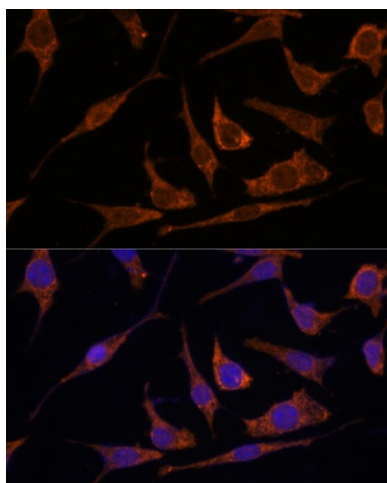


[View online »](#)

Product images:



Western blot analysis of extracts of various cell lines, using RPE antibody ([TA381024]) at 1:1000 dilution. | Secondary antibody: HRP Goat Anti-Rabbit IgG (H+L) at 1:10000 dilution. | Lysates/proteins: 25ug per lane. | Blocking buffer: 3% nonfat dry milk in TBST. | Detection: ECL Basic Kit . | Exposure time: 5s.



Immunofluorescence analysis of L929 cells using RPE Polyclonal Antibody ([TA381024]) at dilution of 1:100 (40x lens). Blue: DAPI for nuclear staining.