

Product datasheet for **TA381023**

RPAP3 Rabbit Polyclonal Antibody

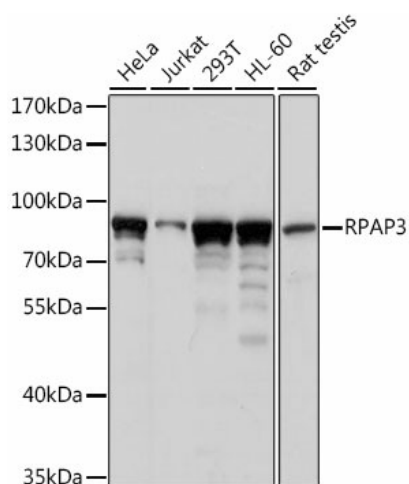
Product data:

Product Type:	Primary Antibodies
Applications:	ICC/IF, WB
Recommended Dilution:	WB,1:500 - 1:2000 IF,1:50 - 1:200
Reactivity:	Human, Mouse, Rat
Modifications:	Unmodified
Host:	Rabbit
Isotype:	IgG
Clonality:	Polyclonal
Immunogen:	Recombinant fusion protein containing a sequence corresponding to amino acids 17-241 of human RPAP3 (NP_001139547).
Formulation:	Buffer: PBS with 0.02% sodium azide,50% glycerol,pH7.3.
Concentration:	lot specific
Purification:	Affinity purification
Conjugation:	Unconjugated
Storage:	Store at -20°C. Avoid freeze / thaw cycles.
Stability:	Shelf life: one year from despatch.
Predicted Protein Size:	57kDa/71kDa/75kDa
Gene Name:	RNA polymerase II associated protein 3
Database Link:	Entrez Gene 79657 Human Q9H6T3
Background:	This gene encodes an RNA polymerase II-associated protein. The encoded protein may function in transcriptional regulation and may also regulate apoptosis. Alternatively spliced transcript variants have been described.
Synonyms:	FLJ21908; spag

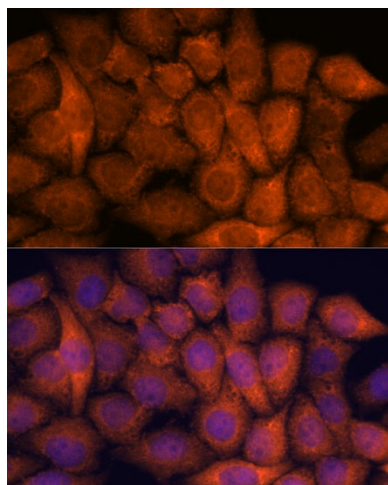


[View online »](#)

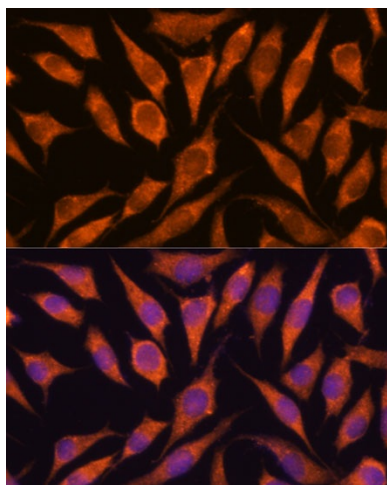
Product images:



Western blot analysis of extracts of various cell lines, using RPAP3 antibody (TA381023) at 1:1000 dilution. | Secondary antibody: HRP Goat Anti-Rabbit IgG (H+L) at 1:10000 dilution. | Lysates/proteins: 25ug per lane. | Blocking buffer: 3% nonfat dry milk in TBST. | Detection: ECL Basic Kit . | Exposure time: 1s.



Immunofluorescence analysis of HeLa cells using RPAP3 antibody (TA381023) at dilution of 1:100. Blue: DAPI for nuclear staining.



Immunofluorescence analysis of L929 cells using RPAP3 antibody (TA381023) at dilution of 1:100. Blue: DAPI for nuclear staining.