

## Product datasheet for **TA381005**

### **RNPEP Rabbit Polyclonal Antibody**

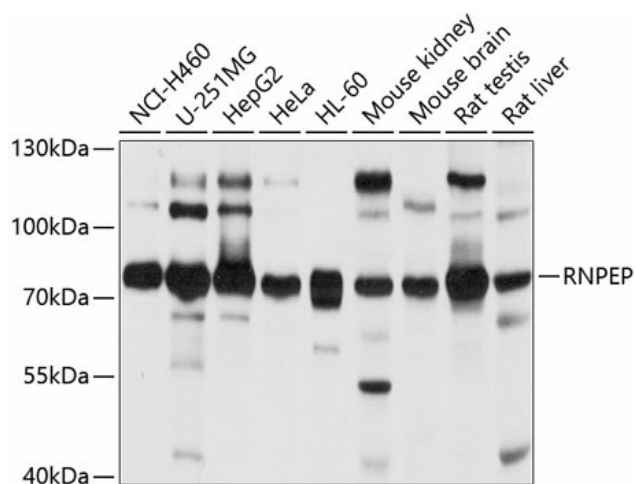
#### **Product data:**

<b>Product Type:</b>	Primary Antibodies
<b>Applications:</b>	WB
<b>Recommended Dilution:</b>	WB,1:1000 - 1:2000
<b>Reactivity:</b>	Human, Mouse, Rat
<b>Modifications:</b>	Unmodified
<b>Host:</b>	Rabbit
<b>Isotype:</b>	IgG
<b>Clonality:</b>	Polyclonal
<b>Immunogen:</b>	Recombinant fusion protein containing a sequence corresponding to amino acids 371-650 of human RNPEP (NP_064601.3).
<b>Formulation:</b>	Buffer: PBS with 0.02% sodium azide,50% glycerol,pH7.3.
<b>Concentration:</b>	lot specific
<b>Purification:</b>	Affinity purification
<b>Conjugation:</b>	Unconjugated
<b>Storage:</b>	Store at -20°C. Avoid freeze / thaw cycles.
<b>Stability:</b>	Shelf life: one year from despatch.
<b>Predicted Protein Size:</b>	72kDa
<b>Gene Name:</b>	arginyl aminopeptidase
<b>Database Link:</b>	<a href="#">Entrez Gene 6051 Human Q9H4A4</a>
<b>Background:</b>	Exopeptidase which selectively removes arginine and/or lysine residues from the N-terminus of several peptide substrates including Arg(0-Leu-enkephalin, Arg(0-Met-enkephalin and Arg(-1-Lys(0-somatostatin-14. Can hydrolyze leukotriene A4 (LTA-4 into leukotriene B4 (LTB-4 (By similarity.
<b>Synonyms:</b>	AP-B; APB; DKFZp547H084



[View online »](#)

## Product images:



Western blot analysis of extracts of various cell lines, using RNPEP antibody (TA381005) at 1:1000 dilution. | Secondary antibody: HRP Goat Anti-Rabbit IgG (H+L) at 1:10000 dilution. | Lysates/proteins: 25ug per lane. | Blocking buffer: 3% nonfat dry milk in TBST. | Detection: ECL Basic Kit . | Exposure time: 5s.