

Product datasheet for **TA380995**

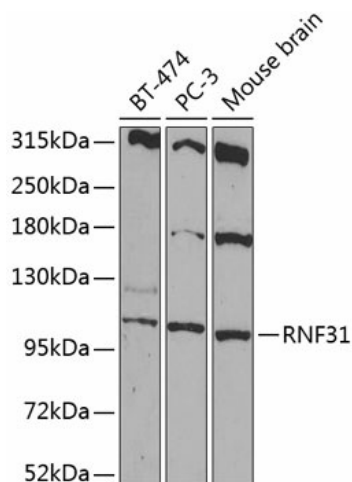
RNF31 Rabbit Polyclonal Antibody

Product data:

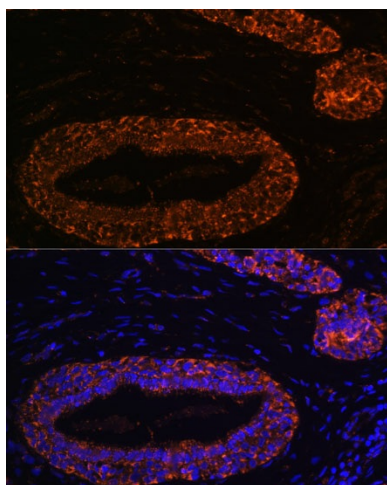
Product Type:	Primary Antibodies
Applications:	ICC/IF, WB
Recommended Dilution:	WB, 1:500 - 1:2000 IF, 1:50 - 1:100
Reactivity:	Human, Mouse
Modifications:	Unmodified
Host:	Rabbit
Isotype:	IgG
Clonality:	Polyclonal
Immunogen:	Recombinant fusion protein containing a sequence corresponding to amino acids 500-700 of human RNF31 (NP_060469.4).
Formulation:	Buffer: PBS with 0.02% sodium azide, 50% glycerol, pH 7.3.
Concentration:	lot specific
Purification:	Affinity purification
Conjugation:	Unconjugated
Storage:	Store at -20°C. Avoid freeze / thaw cycles.
Stability:	Shelf life: one year from despatch.
Predicted Protein Size:	57kDa/102kDa/119kDa
Gene Name:	ring finger protein 31
Database Link:	Entrez Gene 55072 Human Q96EP0
Background:	The protein encoded by this gene contains a RING finger, a motif present in a variety of functionally distinct proteins and known to be involved in protein-DNA and protein-protein interactions. The encoded protein is the E3 ubiquitin-protein ligase component of the linear ubiquitin chain assembly complex. Two transcript variants encoding different isoforms have been found for this gene.
Synonyms:	FLJ10111; FLJ23501; MGC19975; ZIBRA



[View online »](#)

Product images:

Western blot analysis of extracts of various cell lines, using RNF31 antibody (TA380995) at 1:1000 dilution. | Secondary antibody: HRP Goat Anti-Rabbit IgG (H+L) at 1:10000 dilution. | Lysates/proteins: 25ug per lane. | Blocking buffer: 3% nonfat dry milk in TBST. | Detection: ECL Basic Kit. | Exposure time: 90s.



Immunofluorescence analysis of human breast using RNF31 Polyclonal Antibody (TA380995) at dilution of 1:100 (40x lens). Blue: DAPI for nuclear staining.