

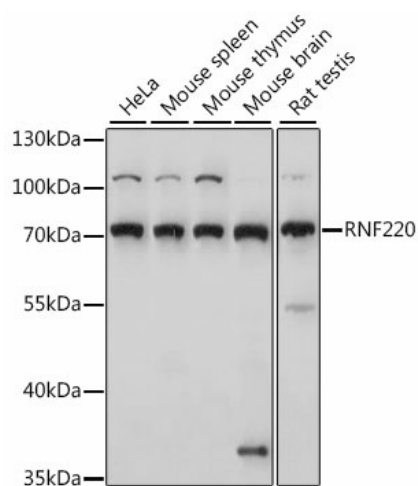
Product datasheet for **TA380994S**

RNF220 Rabbit Polyclonal Antibody

Product data:

Product Type:	Primary Antibodies
Applications:	ELISA, WB
Recommended Dilution:	WB, 1:500 - 1:1000 ELISA, Recommended starting concentration is 1 µg/mL. Please optimize the concentration based on your specific assay requirements.
Reactivity:	Human, Mouse, Rat
Modifications:	Unmodified
Host:	Rabbit
Isotype:	IgG
Clonality:	Polyclonal
Formulation:	PBS with 0.05% proclin300, 50% glycerol, pH7.3.
Concentration:	lot specific
Purification:	Affinity purification
Conjugation:	Unconjugated
Storage:	Store at -20°C. Avoid freeze / thaw cycles.
Stability:	Shelf life: one year from despatch.
Predicted Protein Size:	63kDa
Gene Name:	ring finger protein 220
Database Link:	Entrez Gene 55182 Human Q5VTB9
Background:	Predicted to enable ubiquitin protein ligase activity. Involved in positive regulation of canonical Wnt signaling pathway. Part of protein-containing complex.
Synonyms:	C1orf164; FLJ10597; OTTHUMP00000009170; OTTHUMP00000009530

[View online »](#)

Product images:


Western blot analysis of various lysates