

Product datasheet for **TA380975S**

Rnf138 Rabbit Polyclonal Antibody

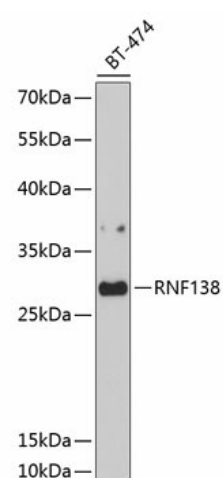
Product data:

Product Type:	Primary Antibodies
Applications:	ELISA, WB
Recommended Dilution:	WB, 1:500 - 1:2000 ELISA, Recommended starting concentration is 1 µg/mL. Please optimize the concentration based on your specific assay requirements.
Reactivity:	Human
Modifications:	Unmodified
Host:	Rabbit
Isotype:	IgG
Clonality:	Polyclonal
Formulation:	Buffer: PBS with 0.02% sodium azide, 50% glycerol, pH 7.3.
Concentration:	lot specific
Purification:	Affinity purification
Conjugation:	Unconjugated
Storage:	Store at -20°C. Avoid freeze / thaw cycles.
Stability:	Shelf life: one year from despatch.
Predicted Protein Size:	24kDa/28kDa
Gene Name:	ring finger protein 138
Database Link:	Q9CQE0
Background:	Predicted to enable protein kinase binding activity; single-stranded DNA binding activity; and ubiquitin protein ligase activity. Acts upstream of or within cellular response to leukemia inhibitory factor. Predicted to be located in chromosome. Predicted to be active in site of double-strand break. Is expressed in several structures, including genitourinary system; lung; nervous system; sensory organ; and tooth. Orthologous to human RNF138 (ring finger protein 138).
Synonyms:	hNARF; HSD-4; MGC8758; NARF; STRIN



[View online »](#)

Product images:



Western blot analysis of lysates from BT-474 cells