

## Product datasheet for **TA380962**

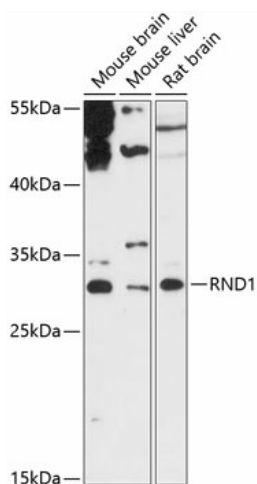
### RND1 Rabbit Polyclonal Antibody

#### Product data:

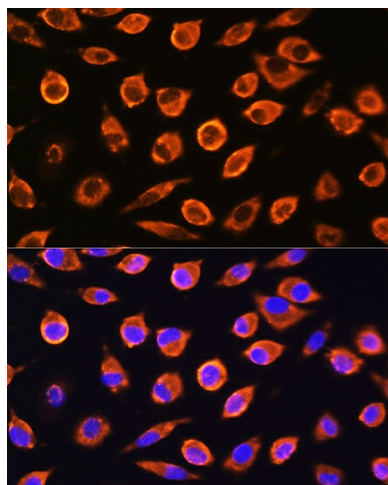
Product Type:	Primary Antibodies
Applications:	ICC/IF, WB
Recommended Dilution:	WB,1:500 - 1:2000 IF,1:50 - 1:200
Reactivity:	Mouse, Rat
Modifications:	Unmodified
Host:	Rabbit
Isotype:	IgG
Clonality:	Polyclonal
Immunogen:	Recombinant fusion protein containing a sequence corresponding to amino acids 103-232 of human RND1 (NP_055285.1).
Formulation:	Buffer: PBS with 0.02% sodium azide,50% glycerol,pH7.3.
Concentration:	lot specific
Purification:	Affinity purification
Conjugation:	Unconjugated
Storage:	Store at -20°C. Avoid freeze / thaw cycles.
Stability:	Shelf life: one year from despatch.
Predicted Protein Size:	26kDa
Gene Name:	Rho family GTPase 1
Database Link:	<a href="#">Q92730</a>
Background:	This gene encodes a protein that belongs to the Rho GTPase family. Members of this family regulate the organization of the actin cytoskeleton in response to extracellular growth factors. A similar protein in rat interacts with a microtubule regulator to control axon extension.
Synonyms:	ARHS; FLJ42294; RHO6; RHOS



[View online »](#)

**Product images:**

Western blot analysis of extracts of various cell lines, using RND1 antibody (TA380962) at 1:3000 dilution.



Immunofluorescence analysis of L929 cells using RND1 Rabbit pAb (TA380962) at dilution of 1:100. Blue: DAPI for nuclear staining.