

Product datasheet for **TA380960S**

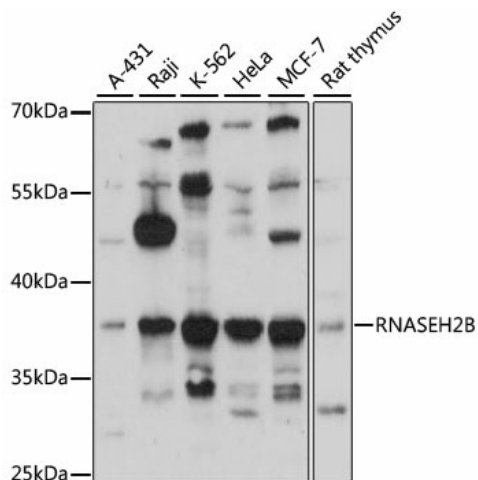
RNASEH2B Rabbit Polyclonal Antibody

Product data:

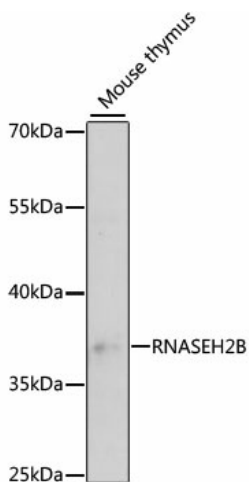
Product Type:	Primary Antibodies
Applications:	WB
Recommended Dilution:	WB,1:500 - 1:2000
Reactivity:	Human, Mouse, Rat
Modifications:	Unmodified
Host:	Rabbit
Isotype:	IgG
Clonality:	Polyclonal
Immunogen:	Recombinant fusion protein containing a sequence corresponding to amino acids 1-290 of human RNASEH2B (NP_078846.2).
Formulation:	Buffer: PBS with 0.02% sodium azide,50% glycerol,pH7.3.
Concentration:	lot specific
Purification:	Affinity purification
Conjugation:	Unconjugated
Storage:	Store at -20°C. Avoid freeze / thaw cycles.
Stability:	Shelf life: one year from despatch.
Predicted Protein Size:	29kDa/35kDa
Gene Name:	ribonuclease H2 subunit B
Database Link:	Entrez Gene 79621 Human Q5TBB1
Background:	RNase H2 is composed of a single catalytic subunit (A) and two non-catalytic subunits (B and C) and specifically degrades the RNA of RNA:DNA hybrids. The protein encoded by this gene is the non-catalytic B subunit of RNase H2, which is thought to play a role in DNA replication. Multiple transcript variants encoding different isoforms have been found for this gene. Defects in this gene are a cause of Aicardi-Goutieres syndrome type 2 (AGS2).
Synonyms:	AGS2; DLEU8; FLJ11712



[View online »](#)

Product images:


Western blot analysis of extracts of various cell lines, using RNASEH2B antibody ([TA380960]) at 1:3000 dilution. | Secondary antibody: HRP Goat Anti-Rabbit IgG (H+L) at 1:10000 dilution. | Lysates/proteins: 25ug per lane. | Blocking buffer: 3% nonfat dry milk in TBST. | Detection: ECL Basic Kit . | Exposure time: 10s.



Western blot analysis of extracts of mouse thymus, using RNASEH2B antibody ([TA380960]) at 1:3000 dilution. | Secondary antibody: HRP Goat Anti-Rabbit IgG (H+L) at 1:10000 dilution. | Lysates/proteins: 25ug per lane. | Blocking buffer: 3% nonfat dry milk in TBST. | Detection: ECL Basic Kit . | Exposure time: 90s.