

## Product datasheet for **TA380959**

### Ribonuclease H2, subunit A (RNASEH2A) Rabbit Polyclonal Antibody

#### Product data:

Product Type:	Primary Antibodies
Applications:	ICC/IF, WB
Recommended Dilution:	WB,1:500 - 1:2000 IF,1:50 - 1:200
Reactivity:	Human, Rat
Modifications:	Unmodified
Host:	Rabbit
Isotype:	IgG
Clonality:	Polyclonal
Immunogen:	Recombinant fusion protein containing a sequence corresponding to amino acids 1-299 of human RNASEH2A (NP_006388.2).
Formulation:	Buffer: PBS with 0.02% sodium azide,50% glycerol,pH7.3.
Concentration:	lot specific
Purification:	Affinity purification
Conjugation:	Unconjugated
Storage:	Store at -20°C. Avoid freeze / thaw cycles.
Stability:	Shelf life: one year from despatch.
Predicted Protein Size:	33kDa
Gene Name:	ribonuclease H2 subunit A
Database Link:	<a href="#">Entrez Gene 10535 Human O75792</a>



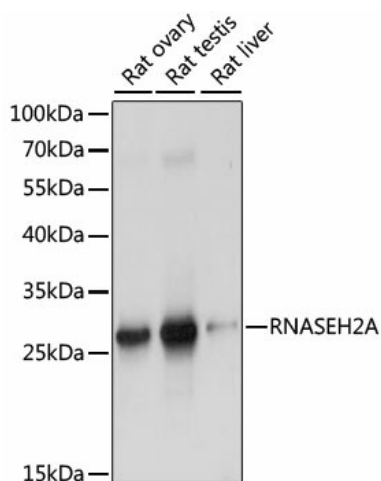
[View online »](#)

**Background:**

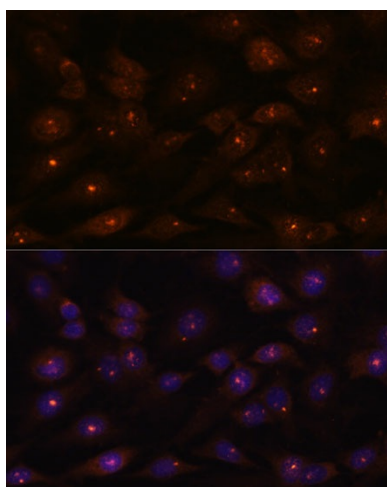
The protein encoded by this gene is a component of the heterotrimeric type II ribonuclease H enzyme (RNaseH2). RNaseH2 is the major source of ribonuclease H activity in mammalian cells and endonucleolytically cleaves ribonucleotides. It is predicted to remove Okazaki fragment RNA primers during lagging strand DNA synthesis and to excise single ribonucleotides from DNA-DNA duplexes. Mutations in this gene cause Aicardi-Goutieres Syndrome (AGS), a an autosomal recessive neurological disorder characterized by progressive microcephaly and psychomotor retardation, intracranial calcifications, elevated levels of interferon-alpha and white blood cells in the cerebrospinal fluid.

**Synonyms:**

AGS4; JUNB; RNASEHI; RNHIA; RNHL

**Product images:**

Western blot analysis of extracts of various cell lines, using RNASEH2A antibody (TA380959) at 1:1000 dilution. | Secondary antibody: HRP Goat Anti-Rabbit IgG (H+L) at 1:10000 dilution. | Lysates/proteins: 25ug per lane. | Blocking buffer: 3% nonfat dry milk in TBST. | Detection: ECL Basic Kit . | Exposure time: 1s.



Immunofluorescence analysis of C6 cells using RNASEH2A antibody (TA380959) at dilution of 1:100. Blue: DAPI for nuclear staining.