

## Product datasheet for **TA380950S**

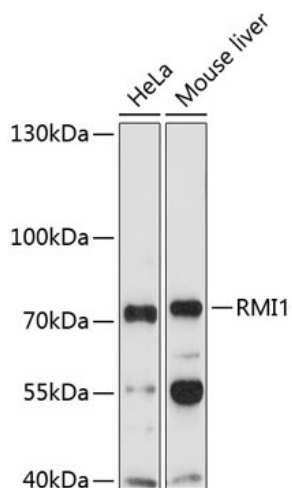
### **BLAP75 (RMI1) Rabbit Polyclonal Antibody**

#### **Product data:**

Product Type:	Primary Antibodies
Applications:	ELISA, WB
Recommended Dilution:	WB, 1:200 - 1:2000 ELISA, Recommended starting concentration is 1 µg/mL. Please optimize the concentration based on your specific assay requirements.
Reactivity:	Human, Mouse
Modifications:	Unmodified
Host:	Rabbit
Isotype:	IgG
Clonality:	Polyclonal
Formulation:	Buffer: PBS with 0.02% sodium azide, 50% glycerol, pH 7.3.
Concentration:	lot specific
Purification:	Affinity purification
Conjugation:	Unconjugated
Storage:	Store at -20°C. Avoid freeze / thaw cycles.
Stability:	Shelf life: one year from despatch.
Predicted Protein Size:	70kDa
Gene Name:	RecQ mediated genome instability 1
Database Link:	<a href="#">Entrez Gene 80010 Human Q9H9A7</a>
Background:	Predicted to enable nucleotide binding activity. Predicted to be involved in double-strand break repair via homologous recombination and resolution of meiotic recombination intermediates. Predicted to act upstream of or within glucose homeostasis; reduction of food intake in response to dietary excess; and response to glucose. Located in nuclear body.
Synonyms:	BLAP75; C9orf76; FAAP75; FLJ12888; RP11-346I8.1



[View online »](#)

**Product images:**


Western blot analysis of various lysates using RMI1 Rabbit pAb (TA380950S) at 1:1000 dilution. Secondary antibody: HRP-conjugated Goat anti-Rabbit IgG (H+L) (AS014) at 1:10000 dilution. Lysates/proteins: 25µg per lane. Blocking buffer: 3% nonfat dry milk in TBST. Detection: ECL Enhanced Kit (RM00021). Exposure time: 90s.