

Product datasheet for **TA380949**

Relaxin 2 (RLN2) Rabbit Polyclonal Antibody

Product data:

| | |
|-------------------------|---|
| Product Type: | Primary Antibodies |
| Applications: | IHC, WB |
| Recommended Dilution: | WB,1:500 - 1:2000 IHC,1:50 - 1:200 |
| Reactivity: | Human, Rat |
| Modifications: | Unmodified |
| Host: | Rabbit |
| Isotype: | IgG |
| Clonality: | Polyclonal |
| Immunogen: | Recombinant fusion protein containing a sequence corresponding to amino acids 25-185 of human RLN2 (NP_604390.1). |
| Formulation: | Buffer: PBS with 0.02% sodium azide,50% glycerol,pH7.3. |
| Concentration: | lot specific |
| Purification: | Affinity purification |
| Conjugation: | Unconjugated |
| Storage: | Store at -20°C. Avoid freeze / thaw cycles. |
| Stability: | Shelf life: one year from despatch. |
| Predicted Protein Size: | 12kDa/21kDa |
| Gene Name: | relaxin 2 |
| Database Link: | Entrez Gene 6019 Human P04090 |



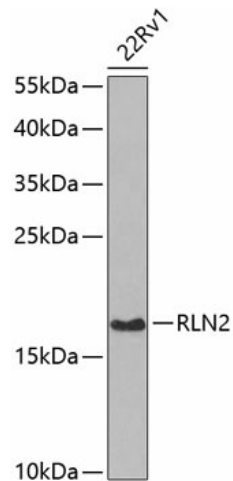
[View online »](#)

Background:

This gene encodes a member of the relaxin subfamily and insulin superfamily of peptide hormones. In humans there are three non-allelic relaxin genes. This gene encodes multiple protein isoforms, at least one of which undergoes proteolytic processing. This processing generates relaxin A and B chains that are linked by disulfide bonds to form the mature peptide hormone. This hormone plays a role in the male and female reproductive systems and was initially noted for its role in pregnancy. This protein also plays broader roles in the cardiovascular system, including in the regulation of blood pressure and control of heart rate, and data from animal models shows that this protein may have anti-fibrotic and cardioprotective effects.

Synonyms:

bA12D24.1.1; bA12D24.1.2; H2; RLXH2

Product images:

Western blot analysis of extracts of 22Rv1 cells, using RLN2 antibody (TA380949) at 1:1000 dilution. | Secondary antibody: HRP Goat Anti-Rabbit IgG (H+L) at 1:10000 dilution. | Lysates/proteins: 25ug per lane. | Blocking buffer: 3% nonfat dry milk in TBST. | Detection: ECL Basic Kit . | Exposure time: 30s.