

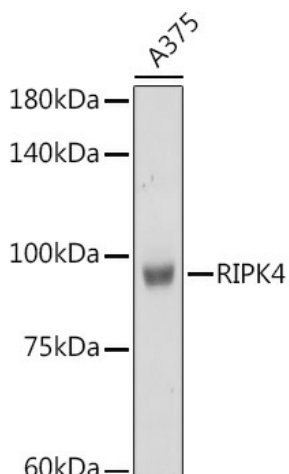
## Product datasheet for TA380943S

### RIPK4 Rabbit Polyclonal Antibody

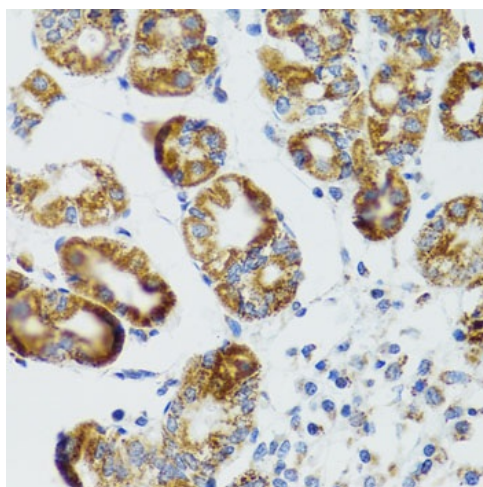
#### Product data:

Product Type:	Primary Antibodies
Applications:	ELISA, IHC, WB
Recommended Dilution:	WB, 1:500 - 1:2000 IHC-P, 1:100 - 1:200 ELISA, Recommended starting concentration is 1 µg/mL. Please optimize the concentration based on your specific assay requirements.
Reactivity:	Human, Mouse
Modifications:	Unmodified
Host:	Rabbit
Isotype:	IgG
Clonality:	Polyclonal
Formulation:	Buffer: PBS with 0.02% sodium azide, 50% glycerol, pH 7.3.
Concentration:	lot specific
Purification:	Affinity purification
Conjugation:	Unconjugated
Storage:	Store at -20°C. Avoid freeze / thaw cycles.
Stability:	Shelf life: one year from despatch.
Predicted Protein Size:	92kDa
Gene Name:	receptor interacting serine/threonine kinase 4
Database Link:	<a href="#">Entrez Gene 54101 Human P57078</a>
Background:	The protein encoded by this gene is a serine/threonine protein kinase that interacts with protein kinase C-delta. The encoded protein can also activate NFκB and is required for keratinocyte differentiation. This kinase undergoes autophosphorylation.
Synonyms:	ANKK2; ANKRD3; DIK; MGC129992; MGC129993; PKK; RIP4

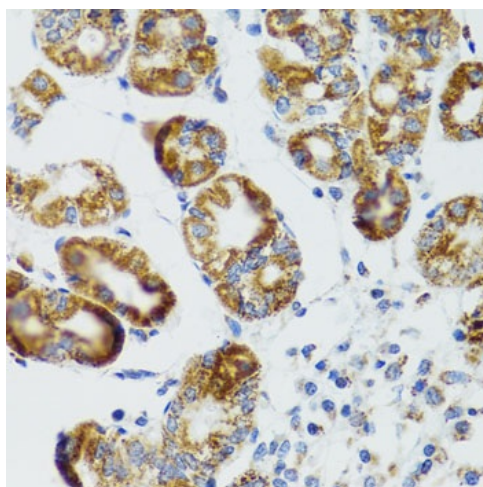

[View online »](#)

**Product images:**


Western blot analysis of lysates from A375 cells



Immunohistochemistry analysis of paraffin-embedded Human liver damage using RIPK4 Rabbit pAb ([TA380943]) at dilution of 1:100 (40x lens). Microwave antigen retrieval performed with 0.01M PBS Buffer (pH 7.2) prior to IHC staining.



Immunohistochemistry analysis of paraffin-embedded Human stomach using RIPK4 Rabbit pAb ([TA380943]) at dilution of 1:100 (40x lens). Microwave antigen retrieval performed with 0.01M PBS Buffer (pH 7.2) prior to IHC staining.