

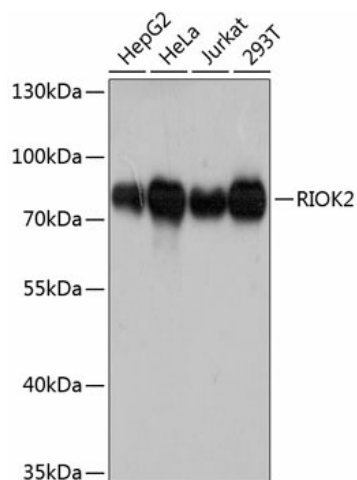
Product datasheet for **TA380932S**

RIOK2 Rabbit Polyclonal Antibody

Product data:

Product Type:	Primary Antibodies
Applications:	ELISA, WB
Recommended Dilution:	WB, 1:500 - 1:2000 ELISA, Recommended starting concentration is 1 µg/mL. Please optimize the concentration based on your specific assay requirements.
Reactivity:	Human
Modifications:	Unmodified
Host:	Rabbit
Isotype:	IgG
Clonality:	Polyclonal
Formulation:	Buffer: PBS with 0.02% sodium azide, 50% glycerol, pH 7.3.
Concentration:	lot specific
Purification:	Affinity purification
Conjugation:	Unconjugated
Storage:	Store at -20°C. Avoid freeze / thaw cycles.
Stability:	Shelf life: one year from despatch.
Predicted Protein Size:	63kDa
Gene Name:	RIO kinase 2
Database Link:	Entrez Gene 55781 Human Q9BVS4
Background:	Predicted to enable protein kinase activity. Involved in several processes, including positive regulation of rRNA processing; positive regulation of ribosomal small subunit export from nucleus; and regulation of mitotic metaphase/anaphase transition. Located in cytoplasm. Part of preribosome, small subunit precursor.
Synonyms:	FLJ11159; RIO2

[View online »](#)

Product images:

Western blot analysis of various lysates using RIOK2 Rabbit pAb ([TA380932]) at 1:3000 dilution. Secondary antibody: HRP-conjugated Goat anti-Rabbit IgG (H+L) (AS014) at 1:10000 dilution. Lysates/proteins: 25µg per lane. Blocking buffer: 3% nonfat dry milk in TBST. Detection: ECL Basic Kit (RM00020). Exposure time: 90s.