

Product datasheet for **TA380930S**

RIN2 Rabbit Polyclonal Antibody

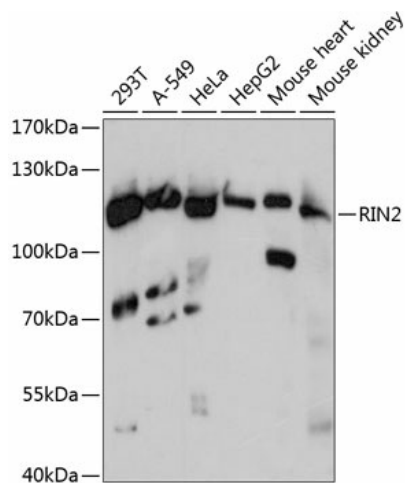
Product data:

Product Type:	Primary Antibodies
Applications:	ELISA, WB
Recommended Dilution:	WB, 1:500 - 1:2000 ELISA, Recommended starting concentration is 1 µg/mL. Please optimize the concentration based on your specific assay requirements.
Reactivity:	Human, Mouse
Modifications:	Unmodified
Host:	Rabbit
Isotype:	IgG
Clonality:	Polyclonal
Formulation:	Buffer: PBS with 0.02% sodium azide, 50% glycerol, pH 7.3.
Concentration:	lot specific
Purification:	Affinity purification
Conjugation:	Unconjugated
Storage:	Store at -20°C. Avoid freeze / thaw cycles.
Stability:	Shelf life: one year from despatch.
Predicted Protein Size:	100kDa
Gene Name:	Ras and Rab interactor 2
Database Link:	Entrez Gene 54453 Human Q8WYP3
Background:	The RAB5 protein is a small GTPase involved in membrane trafficking in the early endocytic pathway. The protein encoded by this gene binds the GTP-bound form of the RAB5 protein preferentially over the GDP-bound form, and functions as a guanine nucleotide exchange factor for RAB5. The encoded protein is found primarily as a tetramer in the cytoplasm and does not bind other members of the RAB family. Mutations in this gene cause macrocephaly alopecia cutis laxa and scoliosis (MACS) syndrome, an elastic tissue disorder, as well as the related connective tissue disorder, RIN2 syndrome. Alternative splicing results in multiple transcript variants.


[View online »](#)

Synonyms: MACS; RASSF4

Product images:



Western blot analysis of various lysates using RIN2 Rabbit pAb (TA380930S) at 1:3000 dilution. Secondary antibody: HRP-conjugated Goat anti-Rabbit IgG (H+L) (AS014) at 1:10000 dilution. Lysates/proteins: 25µg per lane. Blocking buffer: 3% nonfat dry milk in TBST. Detection: ECL Basic Kit (RM00020). Exposure time: 30s.