

## Product datasheet for **TA380930**

### RIN2 Rabbit Polyclonal Antibody

#### Product data:

Product Type:	Primary Antibodies
Applications:	WB
Recommended Dilution:	WB,1:500 - 1:2000
Reactivity:	Human, Mouse
Modifications:	Unmodified
Host:	Rabbit
Isotype:	IgG
Clonality:	Polyclonal
Immunogen:	Recombinant fusion protein containing a sequence corresponding to amino acids 596-895 of human RIN2 (NP_061866.1).
Formulation:	Buffer: PBS with 0.02% sodium azide,50% glycerol,pH7.3.
Concentration:	lot specific
Purification:	Affinity purification
Conjugation:	Unconjugated
Storage:	Store at -20°C. Avoid freeze / thaw cycles.
Stability:	Shelf life: one year from despatch.
Predicted Protein Size:	100kDa/105kDa
Gene Name:	Ras and Rab interactor 2
Database Link:	<a href="#">Entrez Gene 54453 Human Q8WYP3</a>

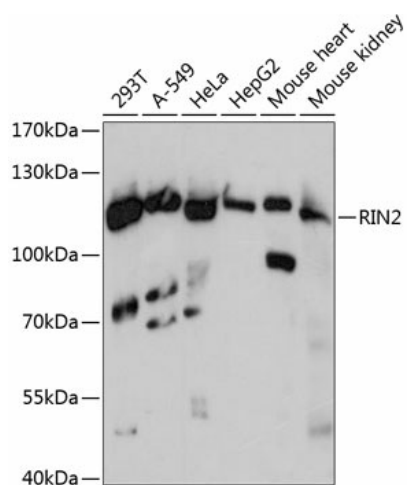
**Background:** The RAB5 protein is a small GTPase involved in membrane trafficking in the early endocytic pathway. The protein encoded by this gene binds the GTP-bound form of the RAB5 protein preferentially over the GDP-bound form, and functions as a guanine nucleotide exchange factor for RAB5. The encoded protein is found primarily as a tetramer in the cytoplasm and does not bind other members of the RAB family. Mutations in this gene cause macrocephaly alopecia cutis laxa and scoliosis (MACS) syndrome, an elastic tissue disorder, as well as the related connective tissue disorder, RIN2 syndrome. Alternative splicing results in multiple transcript variants.



[View online »](#)

Synonyms: MACS; RASSF4

### Product images:



Western blot analysis of extracts of various cell lines, using RIN2 antibody (TA380930) at 1:3000 dilution. | Secondary antibody: HRP Goat Anti-Rabbit IgG (H+L) at 1:10000 dilution. | Lysates/proteins: 25ug per lane. | Blocking buffer: 3% nonfat dry milk in TBST. | Detection: ECL Basic Kit . | Exposure time: 30s.