

Product datasheet for **TA380928**

RIF1 Rabbit Polyclonal Antibody

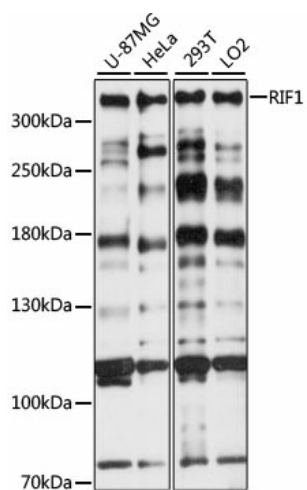
Product data:

Product Type:	Primary Antibodies
Applications:	WB
Recommended Dilution:	WB,1:500 - 1:2000
Reactivity:	Human
Modifications:	Unmodified
Host:	Rabbit
Isotype:	IgG
Clonality:	Polyclonal
Immunogen:	Recombinant fusion protein containing a sequence corresponding to amino acids 2173-2472 of human RIF1 (NP_060621.3).
Formulation:	Buffer: PBS with 0.02% sodium azide,50% glycerol,pH7.3.
Concentration:	lot specific
Purification:	Affinity purification
Conjugation:	Unconjugated
Storage:	Store at -20°C. Avoid freeze / thaw cycles.
Stability:	Shelf life: one year from despatch.
Predicted Protein Size:	271kDa/274kDa
Gene Name:	replication timing regulatory factor 1
Database Link:	Entrez Gene 55183 Human Q5UIP0
Background:	This gene encodes a protein that shares homology with the yeast telomere binding protein, Rap1 interacting factor 1. This protein localizes to aberrant telomeres may be involved in DNA repair. Alternate splicing results in multiple transcript variants.
Synonyms:	DKFZp434D1026; DKFZp781N1478; FLJ10599; FLJ12870; OTTHUMP00000162712



[View online »](#)

Product images:



Western blot analysis of extracts of various cell lines, using RIF1 antibody (TA380928) at 1:1000 dilution. | Secondary antibody: HRP Goat Anti-Rabbit IgG (H+L) at 1:10000 dilution. | Lysates/proteins: 25ug per lane. | Blocking buffer: 3% nonfat dry milk in TBST. | Detection: ECL Basic Kit . | Exposure time: 30s.