

Product datasheet for **TA380926S**

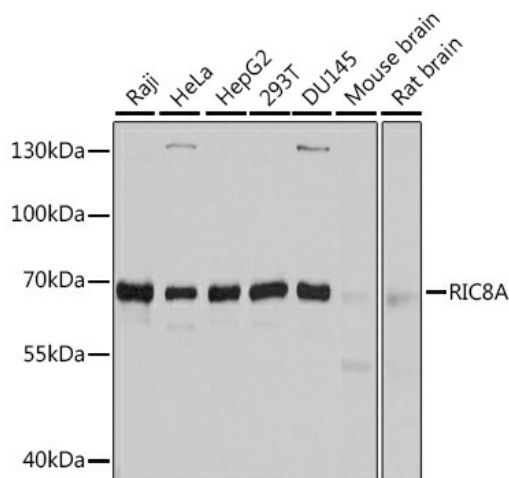
RIC8 (RIC8A) Rabbit Polyclonal Antibody

Product data:

| | |
|-------------------------|---|
| Product Type: | Primary Antibodies |
| Applications: | ELISA, WB |
| Recommended Dilution: | WB, 1:500 - 1:2000 ELISA, Recommended starting concentration is 1 µg/mL. Please optimize the concentration based on your specific assay requirements. |
| Reactivity: | Human, Mouse, Rat |
| Modifications: | Unmodified |
| Host: | Rabbit |
| Isotype: | IgG |
| Clonality: | Polyclonal |
| Formulation: | Buffer: PBS with 0.02% sodium azide, 50% glycerol, pH 7.3. |
| Concentration: | lot specific |
| Purification: | Affinity purification |
| Conjugation: | Unconjugated |
| Storage: | Store at -20°C. Avoid freeze / thaw cycles. |
| Stability: | Shelf life: one year from despatch. |
| Predicted Protein Size: | 60kDa |
| Gene Name: | RIC8 guanine nucleotide exchange factor A |
| Database Link: | Entrez Gene 60626 Human Q9NPQ8 |
| Background: | Predicted to enable G-protein alpha-subunit binding activity; GTPase activator activity; and guanyl-nucleotide exchange factor activity. Predicted to be involved in G protein-coupled receptor signaling pathway. Predicted to act upstream of or within several processes, including basement membrane organization; gastrulation; and visual learning. Predicted to be located in membrane. Predicted to be active in cytoplasm and plasma membrane. |
| Synonyms: | MGC104517; MGC131931; MGC148073; MGC148074; RIC8; synembryn |



[View online »](#)

Product images:


Western blot analysis of various lysates using RIC8A Rabbit pAb (TA380926S) at 1:3000 dilution. Secondary antibody: HRP-conjugated Goat anti-Rabbit IgG (H+L) (AS014) at 1:10000 dilution. Lysates/proteins: 25µg per lane. Blocking buffer: 3% nonfat dry milk in TBST. Detection: ECL Basic Kit (RM00020). Exposure time: 20s.