

Product datasheet for **TA380921**

MIRO1 (RHOT1) Rabbit Polyclonal Antibody

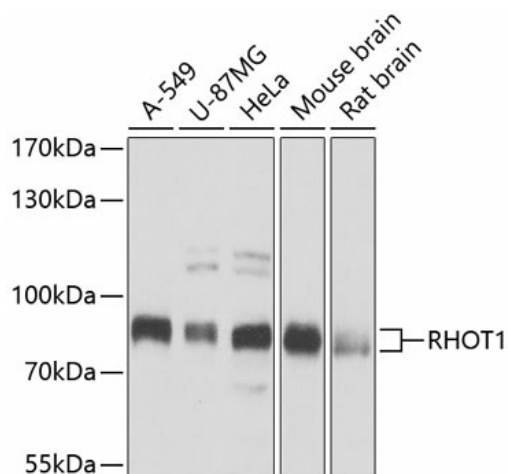
Product data:

Product Type:	Primary Antibodies
Applications:	WB
Recommended Dilution:	WB,1:500 - 1:2000
Reactivity:	Human, Mouse, Rat
Modifications:	Unmodified
Host:	Rabbit
Isotype:	IgG
Clonality:	Polyclonal
Immunogen:	Recombinant fusion protein containing a sequence corresponding to amino acids 310-590 of human RHOT1 (NP_060777.3).
Formulation:	Buffer: PBS with 0.02% sodium azide,50% glycerol,pH7.3.
Concentration:	lot specific
Purification:	Affinity purification
Conjugation:	Unconjugated
Storage:	Store at -20°C. Avoid freeze / thaw cycles.
Stability:	Shelf life: one year from despatch.
Predicted Protein Size:	28kDa/66kDa/70kDa/71kDa/74kDa/75kDa/79kDa
Gene Name:	ras homolog family member T1
Database Link:	Entrez Gene 55288 Human Q8IXI2
Background:	Mitochondrial GTPase involved in mitochondrial trafficking. Probably involved in control of anterograde transport of mitochondria and their subcellular distribution.
Synonyms:	ARHT1; FLJ11040; FLJ12633; hMiro-1; MIRO-1



[View online »](#)

Product images:



Western blot analysis of extracts of various cell lines, using RHOT1 antibody (TA380921) at 1:1000 dilution. | Secondary antibody: HRP Goat Anti-Rabbit IgG (H+L) at 1:10000 dilution. | Lysates/proteins: 25ug per lane. | Blocking buffer: 3% nonfat dry milk in TBST. | Detection: ECL Basic Kit. | Exposure time: 1s.