

## Product datasheet for **TA380918S**

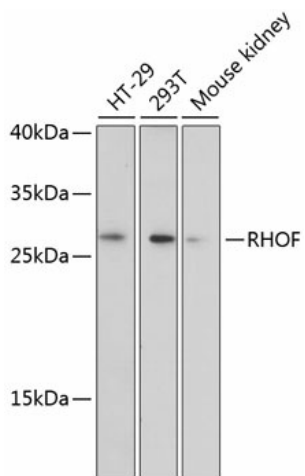
### **RHOF Rabbit Polyclonal Antibody**

#### **Product data:**

Product Type:	Primary Antibodies
Applications:	ELISA, WB
Recommended Dilution:	WB, 1:500 - 1:2000 ELISA, Recommended starting concentration is 1 µg/mL. Please optimize the concentration based on your specific assay requirements.
Reactivity:	Human, Mouse
Modifications:	Unmodified
Host:	Rabbit
Isotype:	IgG
Clonality:	Polyclonal
Formulation:	Buffer: PBS with 0.02% sodium azide, 50% glycerol, pH 7.3.
Concentration:	lot specific
Purification:	Affinity purification
Conjugation:	Unconjugated
Storage:	Store at -20°C. Avoid freeze / thaw cycles.
Stability:	Shelf life: one year from despatch.
Predicted Protein Size:	24kDa
Gene Name:	ras homolog family member F (in filopodia)
Database Link:	<a href="#">Entrez Gene 54509 Human</a> <a href="#">Q9HBH0</a>
Background:	Predicted to enable GTP binding activity; GTPase activity; and protein kinase binding activity. Involved in actin filament organization. Located in extracellular exosome.
Synonyms:	ARHF; FLJ20247; RIF



[View online »](#)

**Product images:**


Western blot analysis of various lysates using RHOF Rabbit pAb (TA380918) at 1:3000 dilution. Secondary antibody: HRP-conjugated Goat anti-Rabbit IgG (H+L) (AS014) at 1:10000 dilution. Lysates/proteins: 25µg per lane. Blocking buffer: 3% nonfat dry milk in TBST. Detection: ECL Enhanced Kit (RM00021). Exposure time: 90s.