

## Product datasheet for **TA380914**

### **RHOB Rabbit Polyclonal Antibody**

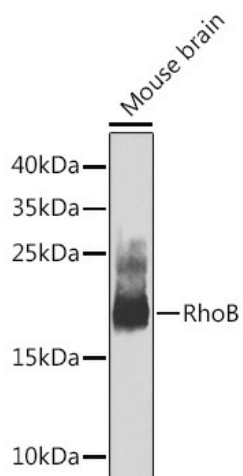
#### **Product data:**

|                                |  |
|--------------------------------|--|
| <b>Product Type:</b>           | Primary Antibodies   |
| <b>Applications:</b>           | WB   |
| <b>Recommended Dilution:</b>   | WB,1:500 - 1:2000  |
| <b>Reactivity:</b>             | Human, Mouse, Rat  |
| <b>Modifications:</b>          | Unmodified   |
| <b>Host:</b>                   | Rabbit   |
| <b>Isotype:</b>                | IgG  |
| <b>Clonality:</b>              | Polyclonal   |
| <b>Immunogen:</b>              | A synthetic peptide corresponding to a sequence within amino acids 100 to the C-terminus of human RhoB (NP_004031.1).  |
| <b>Formulation:</b>            | Buffer: PBS with 0.02% sodium azide,50% glycerol,pH7.3.  |
| <b>Concentration:</b>          | lot specific   |
| <b>Purification:</b>           | Affinity purification  |
| <b>Conjugation:</b>            | Unconjugated   |
| <b>Storage:</b>                | Store at -20°C. Avoid freeze / thaw cycles.  |
| <b>Stability:</b>              | Shelf life: one year from despatch.  |
| <b>Predicted Protein Size:</b> | 22kDa  |
| <b>Gene Name:</b>              | ras homolog family member B  |
| <b>Database Link:</b>          | <a href="#">Entrez Gene 388 Human P62745</a>   |
| <b>Background:</b>             | RHOB (ras homolog family member B) is a protein-coding gene. GO annotations related to this gene include GDP binding and GTP binding. An important paralog of this gene is RND1. |
| <b>Synonyms:</b>               | ARH6; ARHB; H6; MST081; MSTP081; RHOH6   |



[View online »](#)

## Product images:



Western blot analysis of extracts of mouse brain, using RhoB Antibody (TA380914) at 1:1000 dilution. | Secondary antibody: HRP Goat Anti-Rabbit IgG (H+L) at 1:10000 dilution. | Lysates/proteins: 25ug per lane. | Blocking buffer: 3% nonfat dry milk in TBST. | Detection: ECL Enhanced Kit. | Exposure time: 30s.