

Product datasheet for **TA380900**

RHBDF1 Rabbit Polyclonal Antibody

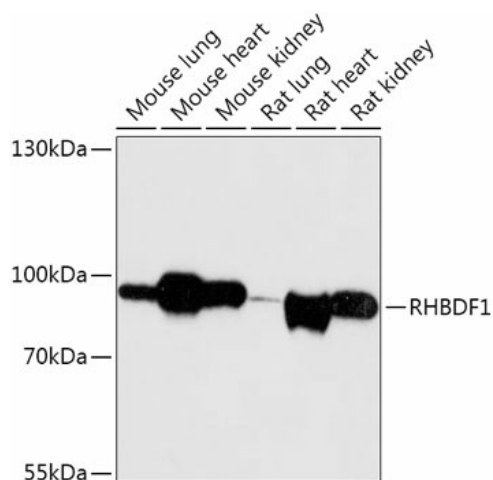
Product data:

Product Type:	Primary Antibodies
Applications:	ICC/IF, WB
Recommended Dilution:	WB, 1:500 - 1:2000 IF, 1:50 - 1:200
Reactivity:	Mouse, Rat
Modifications:	Unmodified
Host:	Rabbit
Isotype:	IgG
Clonality:	Polyclonal
Immunogen:	Recombinant fusion protein containing a sequence corresponding to amino acids 200-400 of human RHBDF1 (NP_071895.3).
Formulation:	Buffer: PBS with 0.02% sodium azide, 50% glycerol, pH 7.3.
Concentration:	lot specific
Purification:	Affinity purification
Conjugation:	Unconjugated
Storage:	Store at -20°C. Avoid freeze / thaw cycles.
Stability:	Shelf life: one year from despatch.
Gene Name:	rhomboid 5 homolog 1
Database Link:	Q96CC6
Background:	Regulates ADAM17 protease, a sheddase of the epidermal growth factor (EGF receptor ligands and TNF, thereby plays a role in sleep, cell survival, proliferation, migration and inflammation. Does not exhibit any protease activity on its own.
Synonyms:	C16orf8; Dist1; EGFR-RS; FLJ2235; FLJ22357; gene-89; gene-90; hDist1; p100hRho

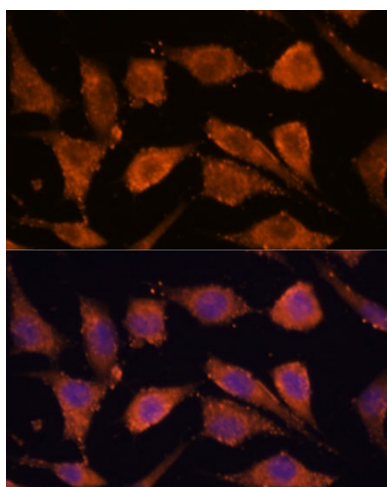


[View online »](#)

Product images:



Western blot analysis of extracts of various cell lines, using RHBDF1 antibody (TA380900) at 1:1000 dilution. | Secondary antibody: HRP Goat Anti-Rabbit IgG (H+L) at 1:10000 dilution. | Lysates/proteins: 25ug per lane. | Blocking buffer: 3% nonfat dry milk in TBST. | Detection: ECL Basic Kit . | Exposure time: 30s.



Immunofluorescence analysis of L929 cells using RHBDF1 antibody (TA380900) at dilution of 1:100. Blue: DAPI for nuclear staining.