

Product datasheet for **TA380895**

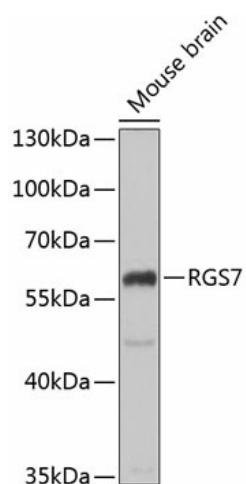
RGS7 Rabbit Polyclonal Antibody

Product data:

| | |
|-------------------------|--|
| Product Type: | Primary Antibodies |
| Applications: | ELISA, WB |
| Recommended Dilution: | WB, 1:500 - 1:2000 ELISA, Recommended starting concentration is 1 µg/mL. Please optimize the concentration based on your specific assay requirements. |
| Reactivity: | Human, Mouse, Rat |
| Modifications: | Unmodified |
| Host: | Rabbit |
| Isotype: | IgG |
| Clonality: | Polyclonal |
| Formulation: | Buffer: PBS with 0.02% sodium azide, 50% glycerol, pH 7.3. |
| Concentration: | lot specific |
| Purification: | Affinity purification |
| Conjugation: | Unconjugated |
| Storage: | Store at -20°C. Avoid freeze / thaw cycles. |
| Stability: | Shelf life: one year from despatch. |
| Predicted Protein Size: | 58kDa |
| Gene Name: | regulator of G-protein signaling 7 |
| Database Link: | Entrez Gene 6000 Human P49802 |
| Background: | Enables G-protein beta-subunit binding activity and GTPase activator activity. Involved in positive regulation of GTPase activity. Located in cytosol. |
| Synonyms: | OTTHUMP00000037994 |

[View online »](#)

Product images:



Western blot analysis of lysates from mouse brain