

Product datasheet for **TA380880**

C13orf15 (RGCC) Rabbit Polyclonal Antibody

Product data:

Product Type:	Primary Antibodies
Applications:	WB
Recommended Dilution:	WB,1:500 - 1:2000
Reactivity:	Human, Mouse, Rat
Modifications:	Unmodified
Host:	Rabbit
Isotype:	IgG
Clonality:	Polyclonal
Immunogen:	A synthetic peptide of Human RGCC.
Formulation:	Buffer: PBS with 0.02% sodium azide,50% glycerol,pH7.3.
Concentration:	lot specific
Purification:	Affinity purification
Conjugation:	Unconjugated
Storage:	Store at -20°C. Avoid freeze / thaw cycles.
Stability:	Shelf life: one year from despatch.
Gene Name:	regulator of cell cycle
Database Link:	Entrez Gene 28984 Human Q9H4X1

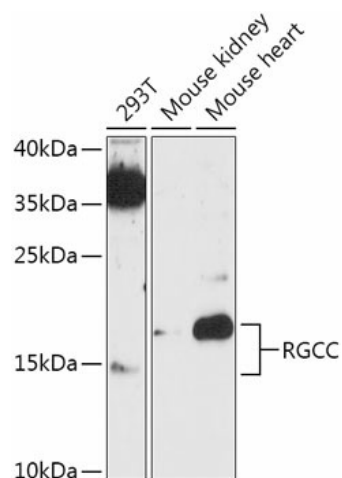
Background: This gene is thought to regulate cell cycle progression. It is induced by p53 in response to DNA damage, or by sublytic levels of complement system proteins that result in activation of the cell cycle. The encoded protein localizes to the cytoplasm during interphase and to centrosomes during mitosis. The protein forms a complex with polo-like kinase 1. The protein also translocates to the nucleus in response to treatment with complement system proteins, and can associate with and increase the kinase activity of cell division cycle 2 protein. In different assays and cell types, overexpression of this protein has been shown to activate or suppress cell cycle progression. [provided by RefSeq, Jul 2008]

Synonyms: bA157L14.2; C13orf15; RGC-32; RGC32



[View online »](#)

Product images:



Western blot analysis of extracts of various cell lines, using RGCC antibody (TA380880) at 1:1000 dilution. | Secondary antibody: HRP Goat Anti-Rabbit IgG (H+L) at 1:10000 dilution. | Lysates/proteins: 25ug per lane. | Blocking buffer: 3% nonfat dry milk in TBST. | Detection: ECL Enhanced Kit. | Exposure time: 90s.