

## Product datasheet for **TA380876S**

### RFX1 Rabbit Polyclonal Antibody

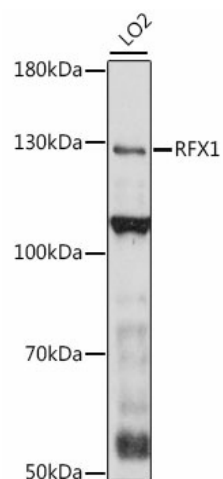
#### Product data:

Product Type:	Primary Antibodies
Applications:	ELISA, WB
Recommended Dilution:	WB, 1:500 - 1:2000 ELISA, Recommended starting concentration is 1 µg/mL. Please optimize the concentration based on your specific assay requirements.
Reactivity:	Human
Modifications:	Unmodified
Host:	Rabbit
Isotype:	IgG
Clonality:	Polyclonal
Formulation:	Buffer: PBS with 0.02% sodium azide, 50% glycerol, pH 7.3.
Concentration:	lot specific
Purification:	Affinity purification
Conjugation:	Unconjugated
Storage:	Store at -20°C. Avoid freeze / thaw cycles.
Stability:	Shelf life: one year from despatch.
Predicted Protein Size:	105kDa
Gene Name:	regulatory factor X1
Database Link:	<a href="#">Entrez Gene 5989 Human P22670</a>
Background:	This gene encodes a member of the regulatory factor X (RFX) family of transcription factors, which are characterized by a winged-helix DNA-binding domain. The encoded transcription factor contains an N-terminal activation domain and a C-terminal repression domain, and may activate or repress target gene expression depending on cellular context. This transcription factor has been shown to regulate a wide variety of genes involved in immunity and cancer, including the MHC class II genes and genes that may be involved in cancer progression. This gene exhibits altered expression in glioblastoma and the autoimmune disease systemic lupus erythematosus (SLE).

[View online »](#)

Synonyms: EF-C; EFC; RFX

## Product images:



Western blot analysis of lysates from LO2 cells